

Marquette University

**e-Publications@Marquette**

---

Community Engagement Administration

Community Engagement, Office of

---

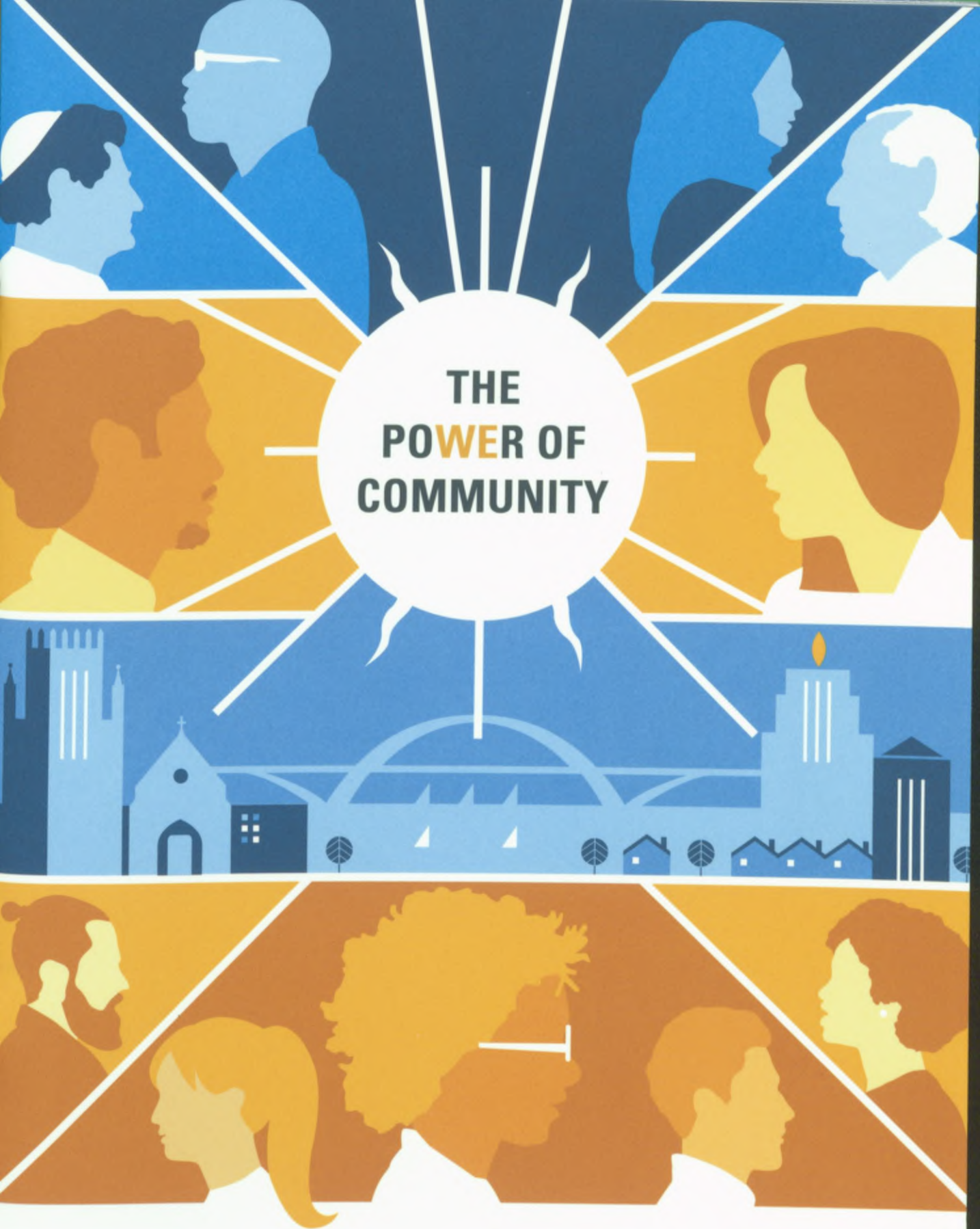
2019

## **The Power of Community**

Daniel Bergen

Follow this and additional works at: [https://epublications.marquette.edu/commengage\\_admin](https://epublications.marquette.edu/commengage_admin)

---



**MARQUETTE**  
UNIVERSITY

**BE THE  
DIFFERENCE.**



“

It is like Marquette is returning to  
the days of its founding in 1881.  
It's transformational.

**Rocky Marcoux, Sp '82**  
Commissioner, City of Milwaukee

I used to think of Marquette University  
as just happening to be in Milwaukee.  
Now I can't separate the two.

**Marcus White**  
Vice President of Community Engagement,  
Greater Milwaukee Foundation





# WE BELIEVE.

At Marquette University, serving others is our mission and our calling. We have always reached out to our neighbors, consciously



choosing to engage and collaborate. The difference in our approach during recent years is how we have coordinated our internal efforts, committing our resources to where they're most needed to seek social justice and advance human dignity. Through our intentional internal efforts, our students, faculty and staff are engaged at every level. Find us in neighborhoods through schools such as Nativity Jesuit Academy, Cristo Rey Milwaukee and Marquette University High School, serving the needs of the hungry and homeless through Midnight Run, and supporting nonprofit organizations like Scaling Wellness in Milwaukee, where we're addressing generational trauma and creating a resilient community. The work is rarely easy, yet always fulfilling, inspiring and worthwhile.

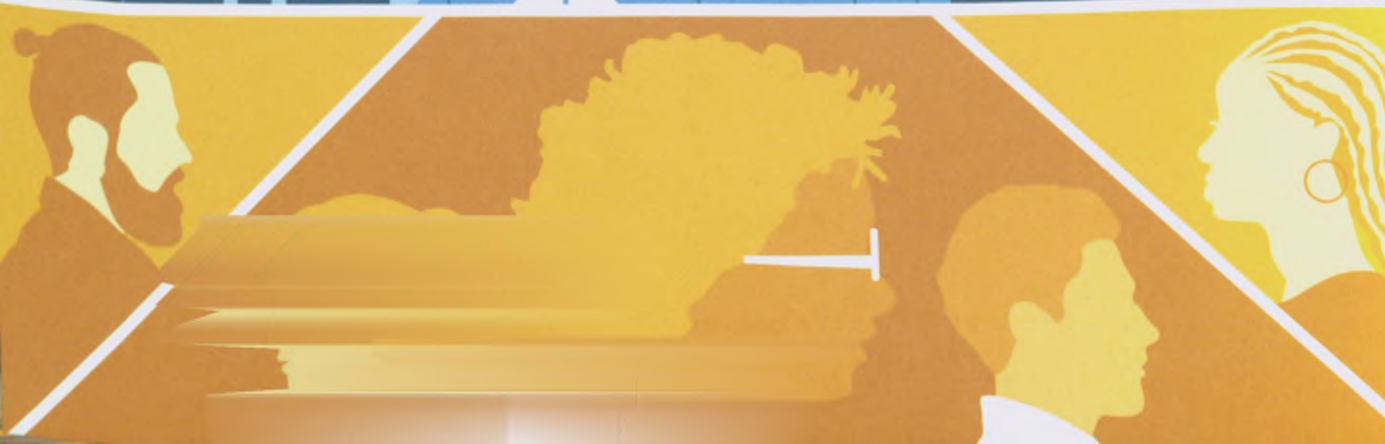
**President Michael R. Lovell**  
Marquette University

## REFLECTION OF OUR COMMITMENT

The Office of Community Engagement, led by Dr. Dan Bergen, Grad '11, was established in 2016 to serve as a central clearinghouse for community engagement activities with a focus on community-based research partnerships in support of our mission as a Catholic, Jesuit university.

Since 2015, Marquette has garnered nine local, state and national awards for community engagement, including:

- The Carnegie Classification for Community Engagement
- One of five institutions recognized nationally by the Washington Center with the Higher Education Civic Engagement Award
- The Presidential Excellence Award by the International Town and Gown Association






## **PARTNERS ARE THE ANSWER.**

A community isn't defined by its buildings and streets, but by the very heart and soul of the people who live there. Reflecting our mission as a Catholic, Jesuit university, Marquette makes community collaboration our priority, partnering with our neighbors to inspire actions that connect challenges with solutions. We strive to Be The Difference in ways that are meaningful and sustainable.

**There is power, passion and potential in partnership.** And together, we unlock it.



## MAKING CONNECTIONS BETWEEN COLLEGES AND COMMUNITY.



In every community, the one constant is change. Marquette takes a hands-on approach, engaging our neighbors in dialogue to identify critical issues, and collaborating to address problems. And we find new opportunities to grow and more ways to connect, with faculty cluster hires for a new Race and Ethnic Studies program, the new Hispanic-serving Institution initiative, as well as the Marquette Forum. Our colleges, students and faculty pair their expertise, energy and enthusiasm with local organizations and entities to generate effective action, positive momentum and lasting partnerships.



## EDUCATION

Education is more than gaining knowledge; it's applying that knowledge for the benefit of society. Area youth are welcomed to campus for learning opportunities in engaging, specialized programs, while students from our colleges connect with members of the community to gain experience, learn and grow in understanding. An inspired lesson in synergy.

### LEADING THE WAY IN LITERACY

Through the College of Education's **Hartman Literacy and Learning Center**, literacy challenges are met through teaching, research and service — a comprehensive approach designed to enhance methods and deliver tangible, meaningful results. From student-facilitated research to tutoring by Marquette undergrads in the Family Literacy Project, our students are learning while providing a vital service to the community.

### REAL PROGRESS IN REAL ESTATE

Began in 2004, **ACRE — Associates in Commercial Real Estate** — identifies and fosters promising men and women of color in Milwaukee to become players in local development. With ongoing teaching support from the College of Business Administration's Real Estate program, more than 200 minority men and women have graduated from the program to date.

### ADVANCING OPPORTUNITY FOR HIGHER EDUCATION

The **Upward Bound** pre-college program supports, guides, and empowers more than 1,400 first-generation, income-eligible young men and women in Milwaukee, while Marquette's **Educational Opportunity Program** initiative develops self-confidence and self-discipline to build a strong foundation that will support and sustain students from high school through life-affirming careers and futures. For 50 years, EOP has supported 4,000-plus students in their efforts to earn a college degree.



*"The Hartman Center made me think about college at a very young age. It made me excited about attending college, and I could not wait."*

**MARKESHA HARRIS**, COMM '16,  
Third-grade Hartman Enrollee

### THE BEHAVIOR CLINIC

is a partnership with the Penfield Children's Center, delivering mental health services to families whose young children exhibit developmental disabilities. Led by Dr. Alan Burkard, professor and chair of counselor education and counseling psychology, the clinic serves over 400 children each year and has trained more than 100 Marquette University Graduate School students in clinical services.

### MILWAUKEE SUCCEEDS

is a community-wide collaboration to which Marquette commits time, energy and leadership. President Michael Lovell serves as co-chair for the partnership, which sets policy, advocates and, using a data-driven process that focuses resources on high-impact strategies, aims to improve educational outcomes for every student and school in Milwaukee.

# 140

The number of schools that  
Marquette has partnerships with  
in the greater Milwaukee area





*"This building positions Milwaukee to be one of the international leaders in water technology and development. ... The talents at our university are going to help solve the world's water problems."*

**DR. MICHAEL R. LOVELL**  
President, Marquette University

# 13

The number of project groups led by the Water Council, students and industry experts that collaborated into a range of issues and areas of focus

## WATER

Water is a vital resource, and ensuring a safe, clean supply is a priority. Marquette students and faculty have immersed themselves in the challenge, combining our knowledge with advanced scientific facilities on campus and in the Milwaukee community. Collectively, we serve as an innovative center for study, exploration, discussion and education of critical water issues.

### A PLACE WHERE IDEAS AND INNOVATIONS FLOW

In the **Global Water Center**, Marquette University Opus College of Engineering researchers collaborate with partners from both academia and industry to provide data and solutions to water-related challenges. From rainwater harvesting and wastewater treatment to desalination, water policy and public art, students from Marquette and the University of Wisconsin–Milwaukee join with A.O. Smith, the Milwaukee Metropolitan Sewerage District and other engaged stakeholders, serving as thought leaders, problem solvers and responsible stewards of this vital natural resource.

## HEALTH CARE

Marquette students serve in a variety of roles that help provide care to greater Milwaukee residents. It's a comprehensive, collaborative approach that pairs people and passion directly with the needs of the community. And that's a great way to ensure a healthy future for all.

### GIVING PHYSICIANS — AND THE COMMUNITY — A HELPING HAND



With the opening of Marquette's College of Health Sciences' new 44,000-square-foot **Physician Assistant Studies facility**, 225 Marquette PAs advance through the highly rated program and directly into the medical field. Many join clinical partners at more than 400 sites, including Aurora Health Care, Froedtert and the Medical College of Wisconsin,

Children's Hospital of Wisconsin, ProHealth Care, Ascension and Prevea Health.

### CARE AND COMPASSION, NOW AND ALWAYS

A **Community Engaged Research Partnership Development Grant** is enabling a collaborative partnership between the College of Nursing and St. Camillus, a life-plan community in Wauwatosa, Wisconsin, caring for older adults and retired Jesuit priests. The goal is a long-term care model that ensures excellent quality of life for the residents.



*"With their ability to perform many duties, work in a variety of settings and spend more time with patients, physician assistants are critical to solving the physician shortage and ensuring positive outcomes."*

#### PAUL COOGAN, M.D.

Medical Director,  
Physician Assistant Studies program

### SCHOOL OF DENTISTRY

Each year, our School of Dentistry students deliver comprehensive care throughout Marquette's statewide network of community clinics. Donated services include oral health education, senior care, screenings and sealants for low-income children, and treatment for special needs patients and the homeless.

# \$17M

The dollar amount of donated dental services that Marquette dentistry students provide annually to more than 30,000 Wisconsin residents



## HAGGERTY MUSEUM OF ART'S WATERMARKS EXHIBIT SPREADS ARTISTRY AND INSIGHT

Partnering with artist Mary Miss, whose work illuminates issues related to social, cultural and environmental sustainability, the **Haggerty Museum of Art** sponsored the creation of *WaterMarks: An Atlas of Water for the City of Milwaukee*. WaterMarks is public art on a citywide scale, inviting artists, scientists and residents to explore their connections to the land, the rivers and Lake Michigan. Sites around the city become a literal canvas, with each unique "watermark" revealing the importance of this vital resource, in a creative, engaging and educational way.

The first watermark, a letter A, was placed at the UCC Acosta Middle School. Collaborating with local artists and scientists, and the UCC Acosta Middle School students and faculty, workshops and walks laid the groundwork for an entire network of sites that examine water-related topics and issues.

## SPREADING NEWS, FURTHERING CAUSES

The campus-based **Milwaukee Neighborhood News Service** (NNS) encourages Diederich College of Communication students to report on issues that matter to Milwaukee's central city. Local, regional and national news outlets frequently pick up the students' written stories, audio interviews, presentations and photography. By illuminating issues and challenges facing the community, and sharing the data and insight with media outlets, we're telling stories that need to be told, but might not otherwise get covered.

## MARQUETTE FORUM

The **Marquette Forum** engages students, faculty, staff and Milwaukee residents in a yearlong series of inclusive conversations, bringing experts of national renown together with those from the Marquette and Milwaukee communities to discuss vital and timely topics.



*Community members attend an educational workshop as part of the Haggerty Museum of Art's WaterMarks project.*

# 5,000

The number of attendees that the Marquette Forum has welcomed since its launch in 2016



## ENGAGING THE COMMUNITY THROUGH EMPOWERING CONVERSATIONS.

At Marquette University Law School's Lubar Center for Public Policy Research and Civic Education, residents, government officials, thought leaders and policy experts are brought together in a variety of ways to illuminate and understand issues facing the community and collaborate on ways to solve challenges, address needs and improve the quality of life. Because reaching our full potential as a community means having full engagement from everyone involved.



### MARQUETTE LAW SCHOOL POLL

Directed by Dr. Charles Franklin, professor of public policy and law, the poll is the largest effort ever created to explore public opinion in Wisconsin. It's earned a "gold standard" reputation nationally for election insights, and also measures residents' opinions on subjects including the economy, public issues, leadership and everyday life.



### EDUCATION POLICY EVENTS

Under the guidance of Senior Fellow in Law and Public Policy Alan Borsuk, issues and opportunities facing education are examined via our Education Policy and Leadership program. We welcome national thought leaders, best-selling authors and leading researchers and analysts of education trends; many diverse viewpoints, backgrounds and perspectives, all sharing the common goal of enriching education experiences and outcomes.





## ON THE ISSUES WITH MIKE GOUSHA

Free and open to the public, this series of one-hour weekday programs features longtime local anchor Mike Gousha engaged in substantive conversations with guests ranging from government officials and prominent authors to policy leaders and public figures. The common thread — discussing perspectives on shaping society in a positive way, both in Milwaukee and Wisconsin as a whole.



## WATER LAW AND POLICY INITIATIVE

This initiative reflects and supports Marquette's immersion into water-related issues. Here, action takes the form of classroom instruction, a water policy blog and public events (such as a conference on public policy and American drinking water). The initiative has garnered recognition for its efforts and insights, and, more importantly, has brought increased attention to water-related issues, challenges and solutions.



## MILWAUKEE AREA PROJECT

This innovative program provides an engaging forum for the discussion of issues confronting the community. By tapping into both public opinion via polling and surveys, and social and demographic data from records and reports, MAP generates a comprehensive perspective on challenges, concerns, preferences and desired outcomes — an invaluable road map to help officials direct their efforts and create positive change.

## REACHING OUT, INVITING IN

### MISSION WEEK

During Mission Week, the Marquette and Milwaukee communities come together each year to listen, learn, reflect and explore issues around truth, reconciliation and peacemaking — and rededicate themselves to maintaining the common good, for the common good of all living beings.

### COMMUNITY ENGAGEMENT SYMPOSIUM

Through this annual symposium, community organizations and faculty members come together to explore research, tools and educational opportunities that can cultivate strong partnerships and confront issues of social justice. Within the first three years, attendance has exceeded 900, and more than 75 presentations have been shared by more than 150 staff, faculty, students and community members.

### O'BRIEN FELLOWSHIP IN PUBLIC SERVICE JOURNALISM

Every year through the Diederich College of Communication, professional journalists collaborate with students and the community on major in-depth investigative stories with the ultimate goal of raising awareness of critical issues, driving positive action and improving lives.



## INITIATIVES FOR RENEWED HOPE, PROGRESS AND EQUALITY.

Partnerships, talents and understanding can propel the community forward. Through a variety of funding sources and community partners, we support interdisciplinary, collaborative programs that address critical areas of inequity in Milwaukee. From health, education and safety to housing, transit and economic opportunity, we take the initiative and take on neighborhood challenges. And with the right initiatives and partnerships, we advance the causes of diversity, equity and inclusion every step of the way.

**PROJECT RETURN  
PROVIDES THE TOOLS  
FOR ONE OF  
CHRISTIANITY'S  
GREATEST GIFTS:  
REDEMPTION**

### The Path Back

Project RETURN's goal is to improve lives and to strengthen communities. The interfaith organization in Milwaukee offers job training, parenting classes and support groups to formerly incarcerated people.

Up to five Marquette students get hands-on experience with the criminal justice system and community interventions as interns with Project RETURN over the course of an academic year, says Dr. Ed de St. Aubin, associate professor of psychology and Project RETURN board member. "I regularly receive emails and calls from former interns telling me how much this experience shaped their education, career, attitudes and even faith."





## GRANTING COLLABORATION

*The Office of Community Engagement offers two \$5,000 seed grants to create or improve a campus-community collaborative research project. The first round of grants was awarded in the 2017–2018 academic year.*

*Dr. Dan Bergen, executive director of the Office of Community Engagement, said awarded projects reflect a strong concept of place in Milwaukee and an innovative collaboration, and respond to a community need.*

## Finding Common Ground



Dr. Aleksandra Snowden (top left), assistant professor of social and cultural sciences, and Dr. Katherine Wilson, Zeidler Center for Public Discussion executive director, are working together to better understand the various effects violent crime has on mothers living in Milwaukee. Zeidler Center staff gather information from mothers living in some of the city's high-crime neighborhoods, which Snowden can then analyze. About 100 mothers from across five neighborhoods have engaged in dialogue.



The partnership is mutually beneficial and creates openings for future work, Snowden says.

"It allows me to carry out community-engaged research on violence in Milwaukee that incorporates mothers' voices," Snowden says. "And, it allows the Zeidler Center to work with Marquette University faculty members and continue advancing existing and creating new relationships with community members."

## THE PRESIDENT'S CHALLENGE

*The President's Challenge is a two-year grant for \$250,000 to support an innovative, community-led project. The initiative is a partnership between Marquette and the Johnson Controls Foundation to address the needs in one of Milwaukee's most challenging neighborhoods. Grant applications come from teams that must include a faculty member from the social sciences, humanities and a STEM field, as well as a community partner. In partnership with community organizations and residents, we can identify, in advance, meaningful solutions to improve the health, education, safety or transportation in Milwaukee neighborhoods.*

## A Partnership to Build On



Frederick Douglass underlined the importance of building opportunities for young people when he said, "It is easier to build strong children than to repair broken men." That quote inspires Grady Crosby (bottom left) and his work as Johnson Controls' vice president of public affairs and chief diversity officer. The foundation is already supporting projects in three Milwaukee neighborhoods — Havenwoods, Westlawn Gardens and Thurston Woods. The new partnership with Marquette through The President's Challenge is another opportunity to build a strong, thriving city, one community at a time.

The inequities and needs facing Milwaukee residents are large, Crosby says. "This situation that we find ourselves in did not happen overnight, and the solution will not happen overnight either," Crosby adds. "We need to make sure we are planting seeds of success, opportunity, exposure to careers and all the things that will help people live lives of high expectations."

Collaboration is a central part of The President's Challenge. The winning project will include a neighborhood partner who can help faculty design sustainable programs and lasting solutions. The community-campus partnership is an opportunity to lead with humility in our city and across the country.

## WEAVING LEARNING AND SERVICE TOGETHER.

Our Jesuit commitment to faithful service isn't just a tradition — it's a mission that permeates every aspect of life at Marquette. Through the Service Learning Program, academic courses are melded with meaningful volunteer experiences, with 1,200 to 1,300 students from 55 to 65 courses placed to meet critical needs at over 130 community agencies each semester. Through their experiences, students can apply, practice, observe and reflect on their course work — a great example of Jesuit pedagogy in action.

### FOUNDED ON A BELIEF IN SERVICE

*Dick Burke, a 1956 Marquette alumnus and founder of Trek Bicycle Corp., believed, "If you are fortunate enough to gain resources in this world, you have a responsibility to give back to society."*

*After his passing, the entrepreneur's namesake foundation has embodied this philosophy, providing \$15.7 million to support undergraduate and graduate-level scholarship programs that incorporate volunteer service as a key component.*

# 85+

Nonprofit organizations/schools in the greater Milwaukee area that have benefited from over 168,000 hours of service provided by Burke Scholars since the program began 25 years ago

### TRINITY FELLOWS

This graduate fellowship program is dedicated to developing urban leaders with a commitment to social and economic justice. This two-year program combines academics and service, with fellows earning a master's degree in one of 13 academic areas, completing course work **focused on urban issues**, and working in nonprofit Milwaukee organizations for 18 hours weekly during the academic year and full time during the summer.

### BURKE SCHOLARS

Every year, the Burke Scholars program awards academically adept Wisconsin high school seniors who demonstrate an exceptional commitment to their community. These full scholarships are given on the condition of maintaining a 3.0 GPA, at least 300 hours of **meaningful community service** annually, and pledge that service to others will remain a part of their lives long after graduation. Helping to nurture lifetime development of a humanitarian ethic expressed through service to others.

### Words to Live By

*When Keoni Bailey's mother told him, "Your education isn't for you — it's for everyone around you," he took those words to heart. Keoni (left) embraced the concept of service as a youth in Oshkosh, Wis., volunteering any way he could. His efforts garnered a Burke Scholarship, and soon he was applying his enthusiasm and energy as a Marquette student. Keoni believes that learning, giving and healing go hand in hand — a philosophy he practices through work in urban community clinics, youth and education programs, and Midnight Run, a volunteer program that focuses on the needs of the hungry and homeless. For Keoni, giving back is more than a worthy goal, it's a way of life. "Our responsibility is being for and with the community. Marquette and Burke empower me to live this way, to bridge gaps, to better understand the community and our role within it."*





## A VIBRANT VISION FOR THE NEAR WEST SIDE.

Making a lasting, positive difference in a community begins with diversity: diversity of people, representation, education, opportunities and thought. Putting that promising philosophy into practice is the goal of the Near West Side Partners, an initiative led by Marquette and four other anchor institutions. Their collective mission:

**To revitalize and sustain the Near West Side  
as a thriving business and residential corridor.**

Together, this partnership of university, government, industry, residents and nonprofits has collaborated to promote economic development, neighborhood investment, improved housing, a unified community identity, and greater safety for residents and businesses in seven key neighborhoods. And Marquette students and faculty have been at the forefront, engaging in meaningful research, teaching and service opportunities.

### CAMPus IMPACT

The best way to engage with the community is to immerse yourself in the community, learning about social issues, challenges and opportunities firsthand. Through the student organization CAMPus Impact, Marquette students participate in neighborhood outings, volunteering opportunities and discussions to discover new ways to connect, gain insight and take action.

### JOINING TOGETHER TO IMPROVE NEIGHBORHOODS AND FUTURES

The \$1.3 million Choice Neighborhood Planning Grant — recently awarded to Marquette and the NWSP — will build upon years of collaborative work between the city of Milwaukee, NWSP and the Housing Authority of Milwaukee, fueling efforts to engage our community in elevating the amazing assets and businesses here, and responding to pressing challenges.

# 100+

More than 100 faculty, staff and students are involved in the Near West Side Partners.

The Near West Side Partners anchor institutions include:

AURORA HEALTH CARE • HARLEY-DAVIDSON • MARQUETTE UNIVERSITY • MILLERCOORS • POTAWATOMI BUSINESS DEVELOPMENT CORPORATION



## PASSION, PRIDE AND WILLPOWER BEYOND THE CLASSROOM.

If there's one trait our many professors have in common, it's the desire to make a positive difference in our community. At Marquette, they pursue their passions and apply their knowledge and abilities to confront and solve critical issues.

*"The key to community is connection. The more we're connected to the land, to the concepts of health and wellness, to our history and to each other, the more we can achieve, the greater we can be."*

Dr. Rob Smith

### DR. ROB SMITH

Henry G. John Professor and Director,  
Center for Urban Research, Teaching and Outreach (CURTO)

As a trained historian, Dr. Rob Smith embraces every opportunity to apply his insights in ways that make a meaningful difference in the lives of people from our community. When Wauwatosa West High School was facing the first signs of racial discord due to major shift in the district's demographics, Smith engaged with youth and school officials to help establish constructive dialogue and encourage the use of district-mined data to combat racial stereotypes. He also inspired African American students to take on roles and responsibilities that will continue to foster understanding and acceptance. While Smith may be a historian, his actions and abilities make him just as adept at shaping a positive future.

*"Community engagement is highly valued at Marquette and meshed perfectly with the research I was already conducting in Milwaukee. Their support provided a natural launch pad for our initiatives."*

Dr. Kim Gretebeck

# 5,000

Over 5,000 faculty, staff, students and community partners have attended Marquette Forum events related to issues of racial justice, health and equity.

### DR. KIM GRETEBECK

Interim Associate Dean for Research and  
Associate Professor of Nursing

During Dr. Kim Gretebeck's time as a critical care nurse in the ER, she recognized that far too many emergencies could've been prevented by making healthier lifestyle choices. Inspired to seek a solution, her path took her from community research in the Detroit area to Marquette, where she utilized that research to create a wellness initiative for seniors, partnering with three Aging Disabilities Resource Centers to develop and distribute it. Named Physical Activity for Life for Seniors, this novel program consists of 10 weeks of exercise followed by six months of follow-up. First offered in rural northern Wisconsin counties, Gretebeck collaborated with the African American community to culturally adapt it to diverse environments and audiences. The successful program will soon spread nationwide, and Gretebeck is already developing the next step: Beneficial Bites: A healthy life nutrition program for older adults.



*"Milwaukee is a big city, but with the help of Marquette's many connections and partnerships, it's made very accessible. We can engage with residents on issues from housing to education to business, and make a real difference."*

Dr. Amber Wichowsky



### DR. AMBER WICHOWSKY

Associate Professor of Political Science

In her role with the Marquette Democracy Lab, Dr. Amber Wichowsky encourages enthusiastic, successful collaboration between three equal partners: students, faculty researchers and the community. Recognizing that the most effective research results in efforts to create positive, real-world change, Wichowsky and her colleagues developed the MDL initiative. Its purpose: Gather input directly from local residents on issues, concerns and interests, utilize that insight to craft meaningful studies, and apply the results in ways that improve the quality of life in the community. Through the process, civic involvement and confidence increases, students and faculty partner to analyze data and formulate solutions, and policies are enacted to address issues and disparities in a meaningful, positive way. That's a win-win-win.



### DR. ANGELIQUE HARRIS

Associate Professor of Social and Cultural Sciences

As the founder and director of Marquette's Center for Gender Studies, Dr. Angelique Harris helps facilitate understanding of how gender, race and sexuality can intersect and influence challenges faced by our society. Marquette students use research to grasp complex issues, formulate theories, solutions and methods, and apply them to the community. Through curriculum studies and special projects (such as a recent \$1 million research project focused on women and girls of color, including post-natal depression, domestic violence related to dating and early educational programming), students, faculty and staff discover ways to promote diversity and inclusion both on campus and in the local community, and make a real difference.

# 125

Since 2016, over 125 Marquette faculty and staff have conducted over 75 community engagement-related presentations at 11 local, state and national conferences.



### DR. LISA EDWARDS

Professor of Counselor Education and Counseling Psychology

### DR. LUCAS TORRES

Associate Professor of Psychology

Recognizing the need for a better bridge between the focus of researchers and the needs of the community, Drs. Lucas Torres and Lisa Edwards established the Latina/o Well-Being Research Initiative. Here, Marquette students and staff collaborate with community organizers to provide exceptional opportunities to study health disparities and diverse influencing factors, generating research that can be used to promote systematic change and healthy lifestyles throughout the entire Latina/o community. The passion of Torres, Edwards and their team for this initiative is equaled only by the tangible, positive difference they make.







**FOR MORE INFORMATION**

Dr. Dan Bergen  
Executive Director  
Office of Community Engagement  
Marquette University  
414.288.3033  
[daniel.bergen@marquette.edu](mailto:daniel.bergen@marquette.edu)  
[marquette.edu/community-engagement](http://marquette.edu/community-engagement)