

Rowan University

Rowan Digital Works

Libraries Scholarship

University Libraries

7-27-2020

COVID-19, the global pandemic, canceled the annual Rowan University Student Scholars Symposium (RUSSS): Rowan Digital Works fills the void

Daniel G. Kipnis

Rowan University, kipnisd@rowan.edu

Follow this and additional works at: https://rdw.rowan.edu/lib_scholarship



Part of the [Scholarly Communication Commons](#), and the [Scholarly Publishing Commons](#)

Let us know how access to this document benefits you - share your thoughts on our feedback form.

Recommended Citation

Kipnis, Daniel G., "COVID-19, the global pandemic, canceled the annual Rowan University Student Scholars Symposium (RUSSS): Rowan Digital Works fills the void" (2020). *Libraries Scholarship*. 22.

https://rdw.rowan.edu/lib_scholarship/22

This Presentation is brought to you for free and open access by the University Libraries at Rowan Digital Works. It has been accepted for inclusion in Libraries Scholarship by an authorized administrator of Rowan Digital Works. For more information, please contact brush@rowan.edu.

COVID-19, the global pandemic, canceled the annual Rowan University Student Scholars Symposium (RUSSS): Rowan Digital Works fills the void

Dan Kipnis, Life Sciences Librarian

kipnisd@rowan.edu

Campbell Library, Rowan University

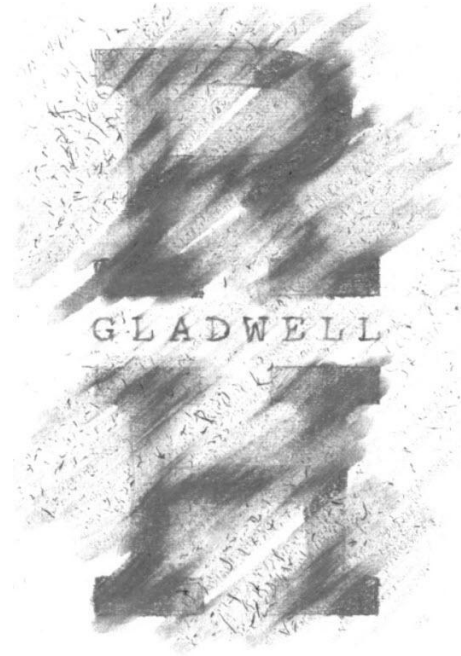
DC-GLUG



Rowan University



Rowan University



Rowan University Student Scholars Symposium

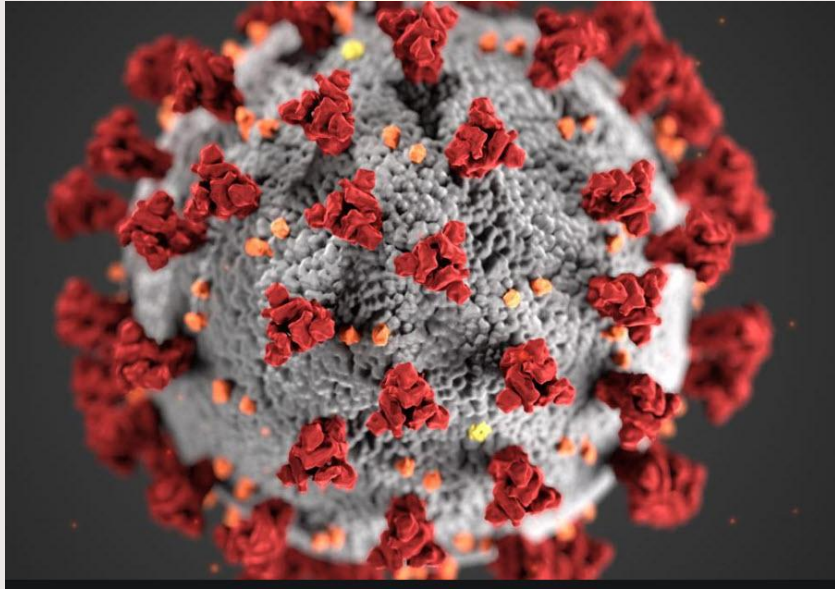


RUSSS

ROWAN UNIVERSITY STUDENT SCHOLARS SYMPOSIUM



COVID-19



- h. All municipal, county, and State public libraries,
and all libraries and computer labs at public and
private colleges and universities.

Everything in Spring 2020: Canceled



**SHUT IT DOWN,
DEALBREAKER!**

Rowan Biological Sciences



[Rowan Today](#) • [Students](#) • [Employees](#) • [Alumni](#) • [Parents](#) • [I](#)

[ADMISSIONS & AID](#)

[ACADEMICS](#)

[CAMPUS LIFE](#)

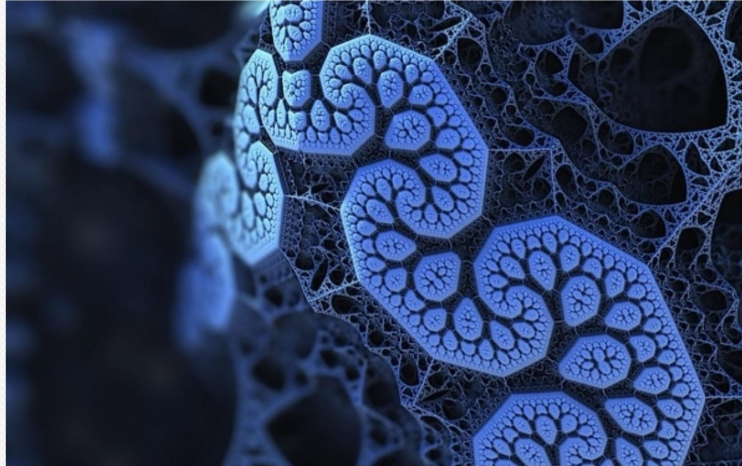
[HEALTH & MEDICINE](#)

[RESEARCH](#)

[THRIVE](#)

[ABOUT](#)

COLLEGE OF
SCIENCE &
MATHEMATICS -
SCHOOL OF
HEALTH
PROFESSIONS



[BACK TO CSM/SHP](#)

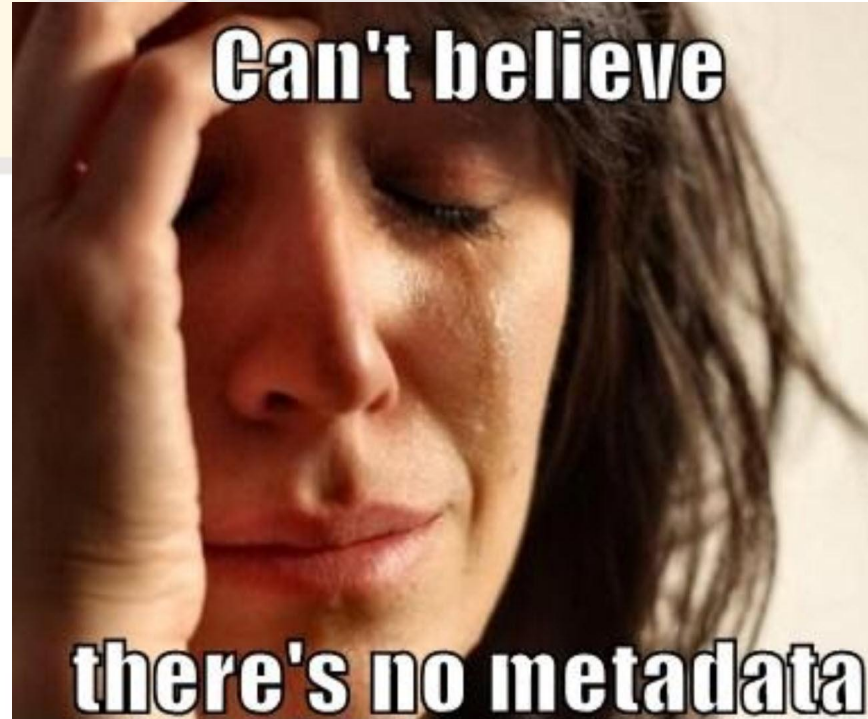
[Rowan University](#) » [CSM/SHP](#) » [Departments](#) » [Biological Sciences](#)

Biological Sciences

Biological Sciences



NO Metadata!!!!!!



Rowan Digital Works (RDW)



Rowan Digital Works

[Home](#) [About](#) [FAQ](#) [My Account](#)



Search

Enter search terms:

[Advanced Search](#)

Notify me via email or [RSS](#)

Browse

[Collections](#)

Browse Research and Scholarship

- [Browse Content by College, School, or Division](#)
- [Researcher Profiles by Author](#)
- [Internal Funding Opportunities](#)
- [Conferences, Events, and Symposia](#)
- [Rowan University Journals](#)

The repository is a service of the Rowan University Libraries. Research and scholarly output posted here has been submitted by Rowan University departments and organizations, and deposited by the Libraries staff. Contact Denise Brush at rdw@rowan.edu to learn about including your work in the repository or creating a researcher profile.

 Glassboro, New Jersey, United States

Rowan Digital Works

This map shows recent readership activity for Rowan Digital Works.

DOIs & Embargoes



Rowan Digital Works (RDW)

<https://rdw.rowan.edu/buss/2020/>

2020

Friday, April 17th

Environmental Predictors of Zooplankton Biodiversity Across a Series of Polymictic Reservoirs



Alyssa Koshy, Rowan University
Kingsley Ike-Anyanwu, Rowan University
Aaron Korbman, Rowan University
Michael Grove, Rowan University
Courtney E. Richmond, Rowan University
Nathan Ruhl, Rowan University

Predicting Seasonal and Spatial Onset of cHABs in Polymictic Reservoirs



Aaron Krivchenia, Rowan University
Matthew Pierce, Rowan University
Benjamin Carone, Rowan University
Michael Grove, Rowan University
Courtney E. Richmond, Rowan University
Nathan Ruhl, Rowan University

Assessing the binding of nectin-1 and CD96 in human cells to investigate how herpes simplex virus evades the innate immune system




Paige T. Richards, Rowan University
Neha Alaparthi, Rowan University
Siranjit Kaur, Rowan University
Claude Krummenacher, Rowan University

Ecological Thresholds and Environmental Indicators of the Density of Zooplankton Exports from a Polymictic Reservoir Series



Poster in Biology Symposium

 **Rowan University**

Rowan Digital Works

Home About FAQ My Account

Search
Enter search terms:

in this collection
Advanced Search
Notify me via email or [RSS](#)

Browse
Collections
Disciplines
Authors

Author Corner
Expert Gallery
About Researcher Profiles
Author FAQ
RDW Release Form

Home > [CONF EVENTS SYMPOSIA](#) > [BUSS](#) > [2020](#) > [Z](#) [Next Event >](#)

Assessing the binding of nectin-1 and CD96 in human cells to investigate how herpes simplex virus evades the innate immune system

[Paige T. Richards, Rowan University](#)
[Neha Alaparthi, Rowan University](#)
[Siranjit Kaur, Rowan University](#)
[Claude Krummenacher, Rowan University](#)

[Follow](#)
[Follow](#)
[Follow](#)
[Follow](#)

Date of Presentation
4-17-2020

Document Type
Poster


College
College of Science & Mathematics


Faculty Sponsor(s)
Claude Krummenacher

Poster Abstract
Nectin-1 is an adhesion protein that also serves as a receptor for herpes


[Download](#)

41 DOWNLOADS
Since May 01, 2020

 **PLUMX METRICS**


 INCLUDED IN
[Biology Commons](#)

SHARE
[f](#) [t](#) [in](#) [e](#) [+](#)

**Rowan University**

IntenseDebate plug-in

[Comments](#)

[Login](#) 

There are no comments posted yet. [Be the first one!](#)

[Post a new comment](#)

Enter text right here!

Comment as a Guest, or login:



Name

Displayed next to your comments.

Email

Not displayed publicly.

Website (optional)

If you have a website, link to it here.

Subscribe to

None 

Submit Comment

Recommended Citation

Elizabeth B. Clark, "The Sacred Rights of the Weak": Pain, Sympathy, and the Culture of Individual Rights in Antebellum America, 82 J. Am. Hist. 463 (1995), reprinted in Women, Church, and State: Religion and the Culture of Individual Rights in Nineteenth-Century America (Hendrik Hartog & Thomas A. Green, eds.), https://scholarship.law.bu.edu/clark_book/2/.

Comments

[Login](#) 

There are no comments posted yet. [Be the first one!](#)

Post a new comment

Enter text right here!

Comment as a Guest, or login:



Name

Displayed next to your comments.

Email

Not displayed publicly.

Website (optional)

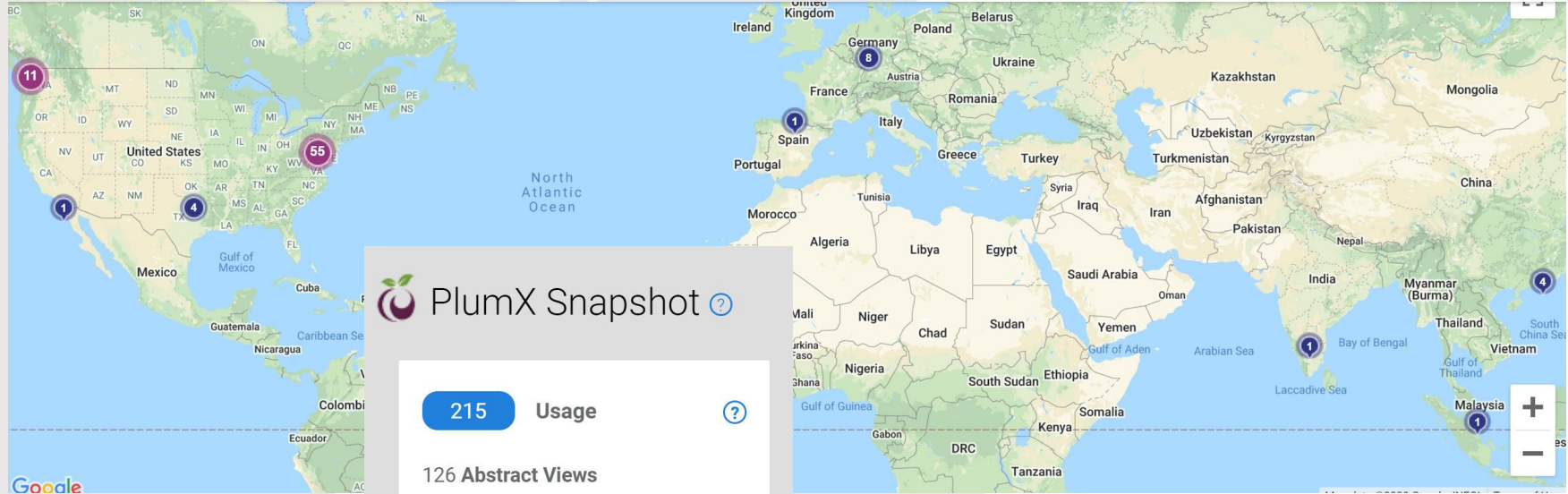
If you have a website, link to it here.

Subscribe to

None 

Submit Comment

Global coverage



Questions?

Dan Kipnis

kipnisd@rowan.edu

Slides:

[https://rdw.rowan.edu](https://rdw.rowan.edu/lib_scholarship/22)
[u/lib scholarship/22](https://rdw.rowan.edu/lib_scholarship/22)

