

Marquette University

e-Publications@Marquette

Mathematics, Statistics and Computer Science Faculty Research and Publications Mathematics, Statistics and Computer Science, Department of (- 2019)

4-2013

Age-Specific Signatures of Glioblastoma at the Genomic, Genetic, and Epigenetic Levels

Serdar Bozdag

Marquette University, serdar.bozdag@marquette.edu

Aiguo Li

National Institutes of Health

Gregory Riddick

National Institutes of Health

Yuri Kotliarov

National Institutes of Health

Mehmet Baysan

National Institutes of Health

See next page for additional authors

Follow this and additional works at: https://epublications.marquette.edu/mscs_fac



Part of the [Computer Sciences Commons](#), [Mathematics Commons](#), and the [Statistics and Probability Commons](#)

Recommended Citation

Bozdag, Serdar; Li, Aiguo; Riddick, Gregory; Kotliarov, Yuri; Baysan, Mehmet; Iwamoto, Fabio M.; Cam, Margaret C.; Kotliarova, Svetlana; and Fine, Howard A., "Age-Specific Signatures of Glioblastoma at the Genomic, Genetic, and Epigenetic Levels" (2013). *Mathematics, Statistics and Computer Science Faculty Research and Publications*. 95.

https://epublications.marquette.edu/mscs_fac/95

Authors

Serdar Bozdag, Aiguo Li, Gregory Riddick, Yuri Kotliarov, Mehmet Baysan, Fabio M. Iwamoto, Margaret C. Cam, Svetlana Kotliarova, and Howard A. Fine

Age-Specific Signatures of Glioblastoma at the Genomic, Genetic, and Epigenetic Levels

Serdar Bozdag^{1,2*}, Aiguo Li¹, Gregory Riddick¹, Yuri Kotliarov^{1,3}, Mehmet Baysan¹, Fabio M. Iwamoto^{1,4}, Margaret C. Cam¹, Svetlana Kotliarova¹, Howard A. Fine^{1,5}

1 Neuro-Oncology Branch, National Cancer Institute, National Institute of Neurological Disorders and Stroke, National Institutes of Health, Bethesda, Maryland, United States of America, **2** Department of Mathematics, Statistics, and Computer Science, Marquette University, Milwaukee, Wisconsin, United States of America, **3** Center for Human Immunology, Autoimmunity and Inflammation, National Heart Lung and Blood Institute, National Institutes of Health, Bethesda, Maryland, United States of America, **4** The Neurological Institute of New York, College of Physicians and Surgeons, Columbia University, New York, New York, United States of America, **5** New York University Cancer Institute, New York University Langone Medical Center, New York, New York, United States of America

Abstract

Age is a powerful predictor of survival in glioblastoma multiforme (GBM) yet the biological basis for the difference in clinical outcome is mostly unknown. Discovering genes and pathways that would explain age-specific survival difference could generate opportunities for novel therapeutics for GBM. Here we have integrated gene expression, exon expression, microRNA expression, copy number alteration, SNP, whole exome sequence, and DNA methylation data sets of a cohort of GBM patients in The Cancer Genome Atlas (TCGA) project to discover age-specific signatures at the transcriptional, genetic, and epigenetic levels and validated our findings on the REMBRANDT data set. We found major age-specific signatures at all levels including age-specific hypermethylation in polycomb group protein target genes and the upregulation of angiogenesis-related genes in older GBMs. These age-specific differences in GBM, which are independent of molecular subtypes, may in part explain the preferential effects of anti-angiogenic agents in older GBM and pave the way to a better understanding of the unique biology and clinical behavior of older versus younger GBMs.

Citation: Bozdag S, Li A, Riddick G, Kotliarov Y, Baysan M, et al. (2013) Age-Specific Signatures of Glioblastoma at the Genomic, Genetic, and Epigenetic Levels. PLoS ONE 8(4): e62982. doi:10.1371/journal.pone.0062982

Editor: Waldemar Debinski, Wake Forest University, United States of America

Received: June 12, 2012; **Accepted:** April 1, 2013; **Published:** April 29, 2013

This is an open-access article, free of all copyright, and may be freely reproduced, distributed, transmitted, modified, built upon, or otherwise used by anyone for any lawful purpose. The work is made available under the Creative Commons CC0 public domain dedication.

Funding: This work was supported by the Intramural Research Program of the National Institutes of Health (NIH), National Cancer Institute. The funders had no role in study design, data collection and analysis, decision to publish, or preparation of the manuscript.

Competing Interests: The authors have declared that no competing interests exist.

* E-mail: serdar.bozdag@marquette.edu

Introduction

Glioblastoma multiforme (GBM) is the most common malignant primary brain tumor [1]. GBM patients have a median survival of about fourteen months despite aggressive multimodality treatment [2]. Given the pathological and clinical heterogeneous nature of GBMs, there have been a number of recent attempts to better understand and characterize these tumors at the molecular and genetic level [3–16]. Among these studies, The Cancer Genome Atlas Project (TCGA) has generated a vast amount of high-throughput data for about 500 GBM samples [4,15].

Advanced age has been identified as an independent significant prognostic factor for survival in glioblastoma clinical trials since the 1970s (Table S1). An analysis of three randomized phase III trials conducted by the Radiation Therapy Oncology Group (RTOG) showed that median survival of GBM patients aged 60 or older was 7.5 months compared to 16.2 months in patients younger than 40 years old [17]. Older age as negative prognostic factor for GBM survival was confirmed by other National Cancer Institute sponsored cooperative groups [18,19] and a large meta-analysis of 3,004 patients with high-grade gliomas [20]. The study that established the current standard of care for newly diagnosed glioblastoma with radiation and concurrent temozolomide also showed a shorter median survival of patients older than 60 years

(11.4 months) compared to those who were 50 years or younger (17.4 months) [21].

The reasons why older age is such a negative prognostic factor remain unclear. Retrospective data and randomized controlled trials do not suggest that older patients receive less than optimal treatment and/or tolerate treatment less well than younger patients thereby suggesting a potential difference in the biology of GBMs in older patients. Thus, it would be valuable to discover age-specific signatures in GBM biology that might explain this survival difference and allow clinicians to develop age-specific therapeutic clinical trials for GBM.

Noushmehr, *et al.* discovered a glioma-CpG island methylator phenotype (G-CIMP) in GBMs [22]. G-CIMP positive patients (about 11% of GBM samples in TCGA) have significantly longer survival than G-CIMP negative patients. G-CIMP positive patients are also significantly younger than G-CIMP negative patients. Nevertheless, age still turns out to be a significant independent prognostic factor for survival despite the G-CIMP status of the tumor [22].

In this study, we computationally analyzed gene expression, exon expression, microRNA expression, DNA methylation, copy number alteration, somatic mutation derived from whole exome sequence, and SNP data sets of the TCGA GBM samples to discover age-specific signatures at the transcriptional, genetic, and epigenetic levels. In order to avoid the confounding variable of the

G-CIMP status of the tumor, we trained a model to predict G-CIMP status of GBM samples based on gene and exon expression profiles in order to exclude G-CIMP positive patients in our analyses.

Materials and Methods

Determining Old and Young GBM Groups

For two-sample tests, we defined a “young” and “old” group. We hypothesized that if there is an old and young biology then samples with “intermediate” ages might represent a mix of these biologies. Thus, we did not include samples with “intermediate” ages in our old and young groups. In order to define the age boundaries for the old and young groups, we examined the histogram of survival for different age groups (Figure S1) and number of samples in each age group (Figure S2). We assigned patients ≤ 40 years old to the *young* group and patients ≥ 70 years old to the *old* group. The number of available samples in the young and old groups changes depending on the data set (Table 1), but overall young and old patients constitute 9% and 21% of all samples, respectively. For linear regression tests, we also used samples with *intermediate* ages (i.e., between 40 and 70) to increase the power of the analysis.

Predicting G-CIMP Status of GBM Patients and Removing G-CIMP Positive Patients

We obtained G-CIMP calls of samples that have methylation data from [22] (Figure 1). To predict G-CIMP calls of samples for which no methylation data is available, we used the k-nearest neighbor algorithm to train models from gene and exon expression profiles of samples with a G-CIMP call. The G-CIMP call prediction results from models of gene and exon expression overlapped by more than 95%. We chose consistent prediction calls as final G-CIMP calls. All analyses were conducted on

Partek® Genomics Suite™ version 6.5 (Copyright © 2010 Partek Inc., St. Louis, MO, USA).

G-CIMP positive patients are significantly younger than G-CIMP negative patients and there is a significant difference between G-CIMP positive and negative patients at the transcriptional, genetic, and epigenetic levels [22]. If we compared the old and young groups without eliminating G-CIMP positive samples, some of the G-CIMP-specific signatures would be potentially considered as age-specific (i.e., Type I error). In order to eliminate this error, we excluded the G-CIMP positive samples, which constituted about 11% of the database in our analysis.

Computing Age-specific Differentially Expressed/methylated Genes and microRNAs

We used data sets from Affymetrix U133A, Affymetrix Human Exon 1.0, and Agilent 244 K G4502A platforms in TCGA for differential gene expression analysis (Table 1). We used DNA methylation data set from Illumina Infinium Human DNA Methylation 27 in TCGA for differential methylation analysis (Table 1). The sample IDs for each data set are listed in Table S2. We used data set from Agilent 8×15 K Human miRNA-specific microarray in TCGA for differential microRNA expression analysis (Table 1). Finally, we used 100 microRNA-specific probes in the Illumina Infinium platform for differential microRNA methylation analysis. We applied two-sample t-test to compute age-specific differentially expressed genes (DEGs) between the old and young groups. Considering age as a continuous variable, we applied linear regression to compute age-specific DEGs. We also applied a nonparametric *ranked-based* linear regression to find age-specific differentially expressed microRNAs and differentially methylated genes (DMGs). We used a ranked-based linear regression on microRNA expression and DNA methylation data, since these data were not normally distributed. We used the samr v1.28 package in R [23] for all tests. For multiple test correction, we applied a permutation-based FDR threshold of 0.05.

Table 1. Number of GBM samples used in this study (downloaded from the TCGA repository on June 29, 2011, Sample IDs are in Table S1).

Data Type	Platform	Level ¹	Institute	# Old ²	# Young ²	Total
Gene expression	Affymetrix HT Human Genome U133 Array Plate Set	2	Broad Institute of MIT and Harvard	92	37	422
Exon expression	Affymetrix Human Exon 1.0 ST Array	3	Lawrence Berkeley National Laboratory	80	34	382
Gene expression	Agilent 244K Custom Gene Expression G4502A	2	University of North Carolina	92	37	420
miRNA expression	Agilent 8×15K Human miRNA-specific microarray	3	University of North Carolina	80	34	385
Methylation	Illumina Infinium Human DNA Methylation 27	2	Johns Hopkins/University of Southern California	56	22	256
Copy Number	Agilent Human Genome CGH Microarray 244A	3	Memorial Sloan-Kettering Cancer Center	87	36	406
SNP	Affymetrix Genome-Wide Human SNP Array 6.0	3	Broad Institute of MIT and Harvard	88	32	390
SNP	Illumina 550K Infinium HumanHap550 SNP Chip	3	HudsonAlpha Institute for Biotechnology	78	33	376
Whole Exome Sequence	Illumina Genome Analyzer IIx	N/A	Broad Institute of MIT and Harvard	55	12	202

¹Level 2 refers to probeset-level data and level 3 refers to gene-level data for expression and methylation data sets. Level 3 refers to segmented data for copy number and SNP data sets. There is no level number for whole exome sequence data set as we just used the mutations derived from this data set.

²Old and Young refer to samples ≥ 70 and ≤ 40 years old, respectively.

doi:10.1371/journal.pone.0062982.t001

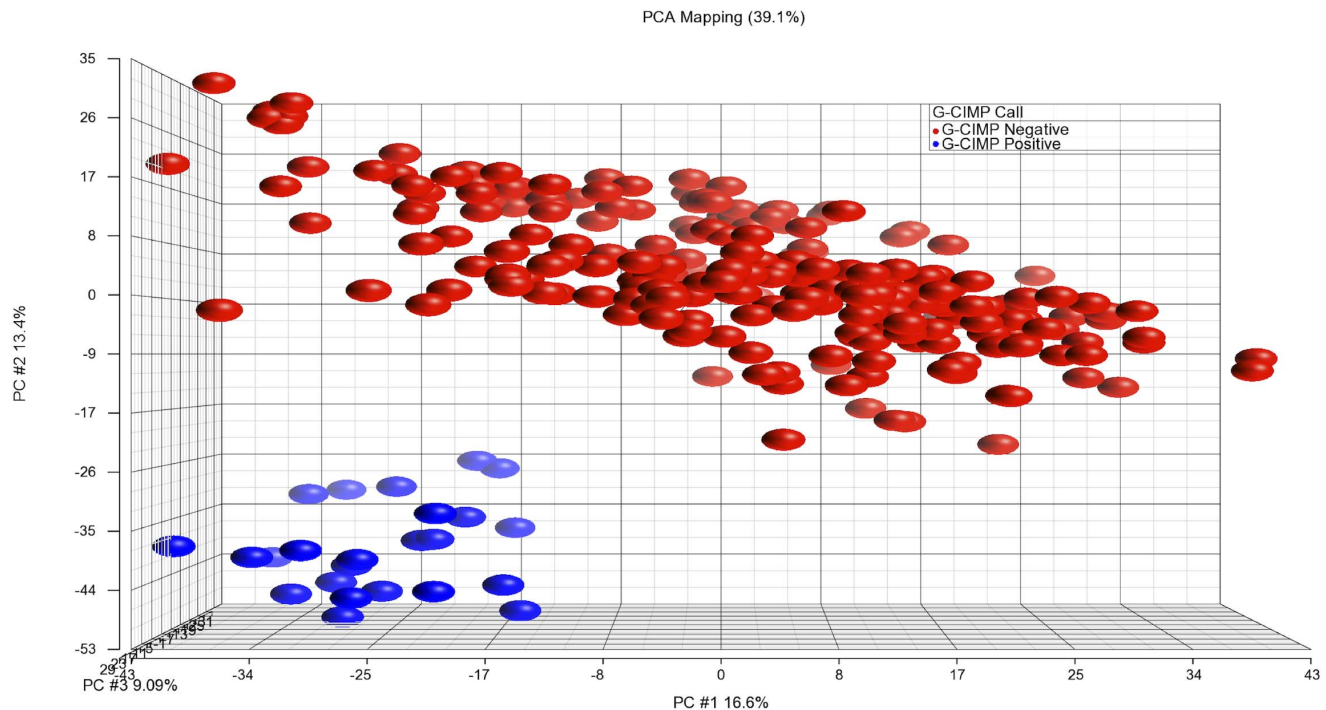


Figure 1. PCA plot of GBM samples with methylation data. Red: G-CIMP negative, Blue: G-CIMP positive. Methylation sites with std. deviation >0.2 are selected to generate this graph.
doi:10.1371/journal.pone.0062982.g001

Computing Age-specific Differentially Altered Genes

We used segmented copy number/SNP data sets in Agilent HG CGH 244 K, Affymetrix Human SNP 6.0, and Illumina 550 K Infinium HumanHap550 platforms in TCGA (Table 1). The samples from Agilent HG CGH 244 K data set cover all samples in Infinium HumanHap550 data set and 95% of the samples in SNP6 data set (Figure S3). We performed the analysis on each data set independently. We generated a project in Nexus v5.1 (BioDiscovery Inc., El Segundo, CA, USA) for each data set and used Nexus' *comparison* function to find differentially altered regions between old and young groups ($q\text{-value} \leq 0.05$). The *comparison* function compares the frequency of alteration in both groups and finds areas where there is significant difference in frequency [24].

Somatic Mutation Data Analysis

We used somatic mutations derived from whole exome sequences in TCGA (TCGA Analysis Working Group Data Release Package 1, 8/26/2011). We performed Fisher's exact test to find genes that are significantly mutated in old or young GBMs.

Survival Analysis

We applied Cox multivariate analysis on variables namely age, molecular subtypes derived in [15] (i.e., classical, neural, mesenchymal, proneural), gender, and Karnofsky performance score. We used *coxph* function in R [25]. We also generated Kaplan-Meier survival plots in Partek® Genomics Suite™ version 6.6.

Functional Analysis

We applied the gene set enrichment analysis (GSEA) algorithm [26,27] to identify upregulated expression pathways and signatures by comparing old and young groups. GSEA mapped all 3272 gene sets in the functional c2 v3 MsigDB database to ranked genome-

wide expression profiles (Affymetrix U133A) of old versus young groups. To compute p-values for enrichment scores, we applied Kolmogorov-Smirnov statistics by constructing a cumulative null distribution with permuting old and young group assignments 1000 times. The significant gene sets were claimed for nominal $p \leq 0.05$. We also used DAVID [28] to create functional annotation charts on age-specific upregulated genes derived from both Affymetrix U133A and Agilent 244 K G4502A data sets via a linear regression method (Fisher's exact test $p \leq 0.05$) and Ingenuity Pathway Analysis (IPA) software (Ingenuity® Systems, www.ingenuity.com) on age-specific angiogenesis related genes to display the interactions among these genes.

Motif Enrichment Analysis

In order to compute enriched motifs in the promoters of the age-specific DEGs, we used PScan [29] to find enriched motifs in the JASPAR database [30]. We checked sequences from 450 bp upstream to 50 bp downstream of the transcription start site for each Refseq transcript of the gene in human genome version hg19. We applied a Benjamini-Hochberg multiple test correction method [31] to correct for multiple testing.

Cross-validation on TCGA Data Set

To validate age-specific DEGs, we applied 10-fold cross-validation on TCGA U133A data set of old and young patients. For each fold, we used the support vector machine (SVM) algorithm to build a model based on training data (i.e., age-specific DEGs obtained from 90% of samples) and used this model to predict the old/young status of the remaining 10% of samples. For comparison, we also used the same algorithm to build a model based on the molecular subtype-specific DEGs of training data. We used Partek® Genomics Suite™ version 6.5 and tried

different parameter choices for the SVM algorithm. To compute DEGs, we used one-way ANOVA.

Validation on External Data Set

To validate the age-specific signatures derived from the TCGA data set, we obtained gene expression profiles of GBM samples from the REMBRANDT database (<http://caintegrator-info.nci.nih.gov/rembrandt>). We predicted the G-CIMP status of these samples as described above. There were 153 G-CIMP negative samples (27 old, 15 young, and 111 intermediate). Due to the small sample size, we were unable to compute statistically significant age-specific DEGs on this data set. We, therefore, filtered in the age-specific genes at the transcriptional level derived from both TCGA Agilent 244 K G4502A and Affymetrix U133A data sets (hereafter the TCGA age signature) in the REMBRANDT data set to create a *filtered* data set. We clustered the filtered data set via hierarchical clustering to see if old and young samples would be separated by TCGA age signature. We also clustered the unfiltered REMBRANDT data set (i.e., all genes) and compared both results. As a more quantitative approach, we also built an ANOVA model on filtered and unfiltered REMBRANDT data sets to compute how much of the variation could be explained by the age group (i.e., old and young). We built a 3-way ANOVA by using gender, age group, and sample source institute as categorical factors. We used Partek® Genomics Suite™ version 6.6 for clustering and building ANOVA model.

Results

Age is an Independent Significant Prognostic Factor for Survival within G-CIMP Negative GBMs

Age is known to be an independent significant prognostic factor for survival in GBMs [1,22]. Our multivariate Cox regression analysis on G-CIMP negative GBM samples also demonstrated that age is an independent significant factor for survival within G-CIMP negative GBM patients (p -value $<5.02\text{e-}07$, Table S3). The Kaplan-Meier plot also shows that there is significant survival difference between old and young GBM samples (log-rank $p=2.42\text{e-}08$, Figure 2). Of note, our results show that GBM molecular subtypes are not a significant factor for survival as previously reported [15].

Age-specific Signature at the Transcriptional Level

We computed age-specific DEGs by using both t-test and linear regression. DEGs found by linear regression mostly contain DEGs found by t-test in all three platforms suggesting that the use of all samples gives more power to the analysis (Table 2). Using linear regression, we found 1749, 909, and 91 DEGs in Affymetrix U133A, Agilent G4502A, and Affymetrix Human Exon 1.0 platforms, respectively ($\text{FDR}<0.05$, Table S4). The low number of DEGs in the exon data set is possibly due to the lower sample size compared with the other data sets. There are 334 DEGs found both in Agilent G4502A and Affymetrix U133A platforms. Among these DEGs, seven of them (*SOD2*, *GTPBP4*, *TPST1*, *GNAI2*, *SIM2*, *ZFP2*, and *SLC22A5*) have also age-specific differential expression in normal brain tissues based on a data set described in [32]. Two hundred and thirty of these genes (69%) are upregulated in older GBMs. There are fourteen genes that were found by both tests in all three platforms (upregulated in old: PRUNE2, TMEM144, SLC14A1; downregulated in old: H2AFY2, ENOSF1, SFRP1, RANBP17, SVIL, TUSC3, ATF7IP2, FZD6, TSPYL5, DLK1, HIST3H2A). A number of these genes are of apparent interest for GBM biology such as TUSC3, which is a tumor suppressor candidate gene and known to be

hypermethylated in GBMs [33]. Additionally, SFRP1 and FZD6 are in the Wnt signalling pathway [34].

Age-specific microRNA Expression Signature

We applied ranked-based linear regression and found 19 differentially expressed microRNAs ($\text{FDR}<0.05$) (ebv-miR-BART1-5p, hsa-miR-422b, hsa-miR-507, hsa-miR-147, ebv-miR-BHRF1-2, hsa-miR-620, hsa-miR-554, hsa-miR-625, hsa-miR-661, hcmv-miR-UL70-5p, hsa-miR-325, hsa-miR-453, hsa-miR-552, hsa-miR-558, hsa-miR-223, hsa-miR-302c, hsa-miR-142-5p, hsa-miR-649, hsa-miR-142-3p). All these microRNAs are downregulated in older GBMs. We used the mirWalk database [35] to find experimentally validated targets of these microRNAs. We found 172 experimentally validated target genes (Table S5). Two of these target genes are upregulated in older GBMs (LOX, VEGFA). VEGFA is known to be upregulated in older GBMs [16,36]. LOX and HIF-1 act in synergy to help tumor cells adapt to hypoxia [37].

Age-specific Signature at the Epigenetic Level

We found 389 age-specific DMGs by using ranked-based linear regression (Table S6). Ninety-eight percent of these DMGs are hypermethylated in the older GBMs. Seventeen genes that are hypermethylated in the older GBMs are polycomb group protein target genes (PCGTs) (Table S7, Fisher's exact test p -value $<1.0\text{e-}10$). Hypermethylation of PCGTs has been previously shown to be associated with aging [38]. We subtracted out genes that are normally methylated in an age specific manner based on previous data sets [39], and found 184 and four genes that are uniquely hypermethylated in the old and young GBMs, respectively (Table S8). Eighteen of the GBM-specific DMGs exist in the Pubmed database [40], which stores genes that are known to undergo methylation in cancer (Table S9, Fisher's exact test p -value $<1.27\text{e-}05$). Eleven genes are both differentially expressed (Agilent and Affymetrix U133A platforms) and methylated with respect to age (Table S10). Seven of them are hypermethylated and downregulated in older GBMs (MYO1B, PRKCB1, VRK2, FZD6, DLK1, SLC25A21, MSC). We also found three differentially methylated microRNAs (hsa-miR_196b, miR_34b, and miR_34c), all of which were hypermethylated in the old group.

Age-specific Signature at the Genetic Level

Each copy number/SNP data set was analyzed in Nexus independently. Figure 3a–c shows the whole genome copy number alteration (CNA) profiles of the old and young groups on these data sets. We found 1044 and 455 differentially altered genes (DAGs) in Affymetrix SNP 6 and HG-CGH 244A platforms, respectively (Table S11). The DAG list found in SNP 6 platform covers 88% of DAGs found in HG-CGH 244A. We could not detect any DAGs on HumanHap550 platform possibly due to the low resolution of this data set. We found the largest DAG list on SNP 6 platform possibly because of its high resolution.

Analyzing the SNP 6 data set, we detected differential deletions only on chromosome 10 for 722 genes. We observed that the old group had a higher frequency of deletion than the young group. We found 321 differentially amplified genes on chromosome 7 with a higher frequency in the old group than the young group and one gene on chromosome 1q (CFHR3) with a higher frequency in the young group than the old group. The high frequency of chromosome 10 deletion and chromosome 7 amplification in the old group, and high frequency of chromosome 1q amplification in the young group have also been reported in a study that compared a cohort of pediatric GBMs with adult GBMs [41].

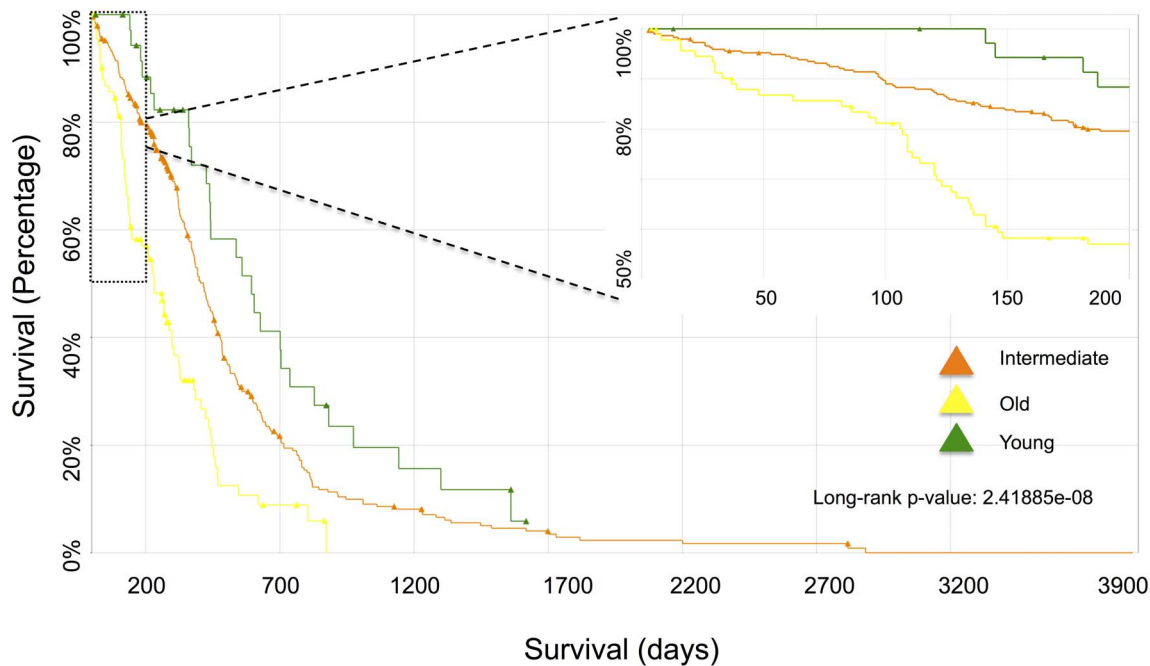


Figure 2. Kaplan-Meier plot between old, young, and middle-aged GBM samples.
doi:10.1371/journal.pone.0062982.g002

We compared the list of DAGs on SNP 6 and the list of DMGs, and found three genes that are both heterozygously deleted and hypermethylated in the old group (HHEX, ITGA8, RASGEF1A). Among these genes, HHEX is downregulated in older GBMs. HHEX is known to downregulate VEGF and VEGF receptors [42]. We also observed a significant negative correlation between HHEX and VEGFA expression levels in the TCGA data set (Table S12).

We also compared the list of DAGs on SNP 6 and the list of DEGs found on both Agilent G4502A and Affymetrix U133A data sets. There are 21 genes that are deleted and downregulated, and 7 genes that are amplified and upregulated in the old group (Table S13).

We also analyzed somatic mutations derived from whole exome sequence data. In general, there are more mutations in the old group (Table 3). There are two genes that stand out: TP53 is mutated in 19 old samples and in only one young sample (Fisher's exact test p -value < 0.068). GRM3 is mutated in 3 out of 12 young samples and none of the old samples (Fisher's exact test p -value < 0.01645).

Motif Enrichment Analysis

We analyzed the promoter regions of differentially expressed genes appear in Affymetrix U133A and Agilent G4502A data sets. We have found several motifs statistically enriched in the promoter regions of these genes including HIF-1A and MYC (FDR ≤ 0.05 Table S14).

Functional Analysis of Age-specific DEGs

We ran a GSEA on the old and young groups to discover upregulated gene sets for each group (Table S15). GSEA analysis found that the younger GBMs maintain an active regulation of G1 entry checkpoint in cell cycle ($p < 0.05$) and have a quiescent phenotype ($p < 0.03$). Older GBMs uphold a strong oxygen depletion environment ($p < 0.04$) that induces the hypoxia inducible factor signaling as indicated by three up-regulated HIF signatures ($p < 0.05$) (Table S15). Furthermore, carbohydrate metabolism with over-expressed glycolysis and glucagon signaling reactomes are enhanced in older GBMs. Younger GBMs showed enrichment of P38_MAPK signaling ($p < 0.01$) and upregulated targets of MYC ($p < 0.04$), BMYB signature ($p < 0.02$), and enhanced stem cell signatures ($p < 0.02$) (Table S15). Moreover, a premalignant signature driven by hepatic stem cell marker, epithelial cell adhesion molecular (EpCAM) is enhanced in younger GBMs ($p < 0.04$) whereas older GBMs showed more advanced tumor profiles ($p < 0.01$) and more invasive expression signatures regulated by integrin-mediated cell migration ($p < 0.03$). Additionally, glioblastoma tumor in young patients showed an increased TNF signaling ($p < 0.05$) and protein translational

Table 2. Number of differentially expressed genes between Old and Young GBM samples for three transcriptomic platforms.

	T-test ¹	Linear regression ¹	Common
Affymetrix HT HG U133A	630	1749	595
Affymetrix Human Exon 1.0 ST	62	91	40
Agilent 244K G4502A	348	909	313
Common (U133A and G4502A)	130	334	115
Common (all three platforms)²	17	40	14

The last row shows the number of differentially expressed genes found in all three platforms.

¹In each test, FDR ≤ 0.05 threshold is applied.

²Shows the number of differentially expressed genes found in all three platforms.

doi:10.1371/journal.pone.0062982.t002

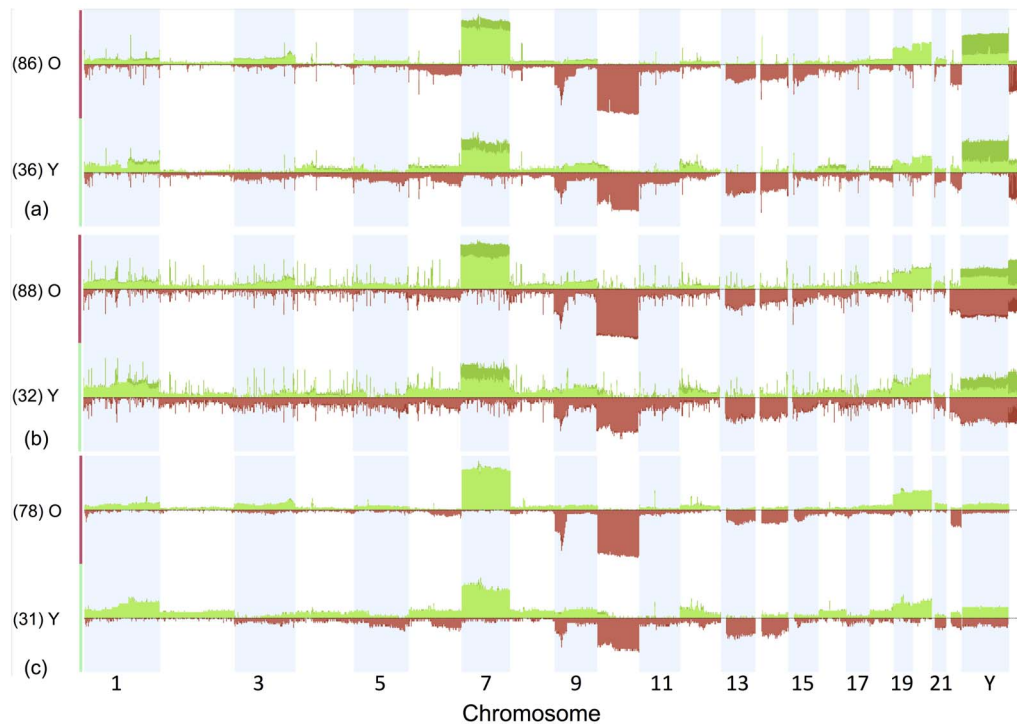


Figure 3. Genome-wide copy number alteration profiles of old and young GBM samples. Data are from (a) Agilent Human Genome CGH Microarray 244A (Memorial Sloan-Kettering Cancer Center), (b) Affymetrix Genome-Wide Human SNP Array 6.0 (Broad Institute of MIT and Harvard), (c) Illumina 550 K Infinium HumanHap550 SNP Chip (HudsonAlpha Institute for Biotechnology) platforms (chr 1–23). Green bars represent amplification and red bars represent deletion. The height of each bar represents the frequency of the alteration in the group. The differentially amplified genes are in chromosome 7 and differentially deleted genes are in chromosome 10. doi:10.1371/journal.pone.0062982.g003

activities ($p < 0.03$), as indicated by the formation of translation initiation complex involving 43S unit (Table S15).

We also ran DAVID on upregulated genes that appear in the Affymetrix U133A and Agilent G4502A data sets. We found enrichment in several GO terms such as “response to hypoxia” (p -value < 0.00123 , enriched genes: VEGFA, SOD2, BNIP3, SLC11A2, EGLN3, PLOD2, NOL3, and ALDOC); “vasculogenesis” (p -value < 0.088 , enriched genes: VEGFA, NTRK2, and KKI) (Table S16).

Cross-validation on TCGA Data Set

We applied 10-fold cross-validation and built a model based on age-specific DEGs on training data and used this model to predict

the old/young status of the remaining test samples. The model achieved over 77% prediction accuracy. For comparison, we also used the same algorithm to build a model based on the molecular subtype-specific DEGs of training data. This model predicted about 64% of prediction accuracy.

Validation on External Data Set

We obtained the gene expression profiles of G-CIMP negative GBM samples from the REMBRANDT database to validate our findings. We created a filtered REMBRANDT data set by filtering in the TCGA age signature (i.e. age-specific differentially expressed genes derived from both TCGA Affymetrix U133A and Agilent 244 K G4502A data sets via linear regression). We

Table 3. Number of mutated genes in old and young GNEG GBMs.

Number of samples ¹	Number of mutated genes in Old	Number of mutated genes in Young
>0	3038	720
>1	561	37
>2	159	3 (GRM3, TTN, PTEN)
>3	49	0
>6	8 (PTEN, EGFR, MUC16, TTN, TP53, RYR2, SLIT3, LRP2)	0
>8	5 (PTEN, EGFR, MUC16, TTN, TP53)	0
>15	2 (PTEN, TP53)	0

¹Shows number of old of young samples each gene is mutated. For instance, there are 3038 genes that are mutated in at least one old sample (see first row) and PTEN is mutated in more than 15 old samples (see last row).

doi:10.1371/journal.pone.0062982.t003

clustered both filtered (Figure 4-A) and unfiltered (i.e. all genes) REMBRANDT data sets (Figure 4-B). To create a reference point, we also clustered old and young GBMs in TCGA Affymetrix U133A data set based on the TCGA age signature (Figure 4-C). We observed that the separation between old and young groups is more apparent in the cluster on filtered data set than the separation on the unfiltered data set (Figure 4). We also observed that the separation of old and young samples in the clustering of filtered data set are very similar to the separation of old and young samples in TCGA Affymetrix data set (Figure 4). Additionally, we built a 3-way ANOVA model on both filtered and unfiltered REMBRANDT data sets by using the categorical factors of age group (i.e., old and young), gender, sample source institute to compute how much of the variation in gene expression is explained by each factor (Figure 5, 6). The results show that age group explains the majority of the variation in the filtered data set, whereas it could not explain the variation in the unfiltered data set.

We also checked whether TCGA DEGs have the same direction of regulation (up or down) in REMBRANDT data set. We applied age-specific linear regression to compute p-value for TCGA DEGs in REMBRANDT data set and created a gene list for both $FDR < 0.05$ and unadjusted p-value < 0.05 thresholds. There were 55 and 148 genes in these gene lists, respectively, which had 100% consistency with respect to the directionality of regulation in TCGA and REMBRANDT data sets.

Discussion

Age has consistently been shown to be one of the most powerful prognostic factors for survival in patients with malignant gliomas

with younger patients generally living much longer than older patients. The negative effects of age seen in a number of systemic cancers have often been ascribed to the physiological stress of metastatic cancer in the setting of concurrent medical problems leading to an increased rate of medical related deaths [43]. Additionally, the poor tolerance of older patients to aggressive toxic systemic chemotherapy often results in either treatment-related complications and/or suboptimal tumor treatment [44]. These clinical variables do not, however, adequately explain the profoundly negative effect of age in patients with GBM since such patients almost never have metastatic disease and do not usually die of concurrent medical problems. Furthermore, the marginal effects of systemic chemotherapy in patients with GBMs means that patients are generally treated less aggressively than patients with systemic cancer and the amount of chemotherapy that GBM patients receive has little impact on overall survival. Furthermore, there are few data to suggest that involved field radiotherapy, the one effective treatment for GBM, is associated with increased mortality in older versus younger patients. The lack of a clinical explanation for the poorer survival of older patients with GBM, together with the growing appreciation of the heterogeneous nature of the disease, leads to the hypothesis that the impact of age on survival may be do to a difference in the biology of GBMs in older patients compared to that in younger patients.

There have been a relatively large number of studies over the last decade demonstrating that GBM is a heterogeneous tumor with the most recent studies suggesting that there are at least four major molecular subtypes of GBM based on gene expression profiling [15]. Those major subtypes, however, do not account for

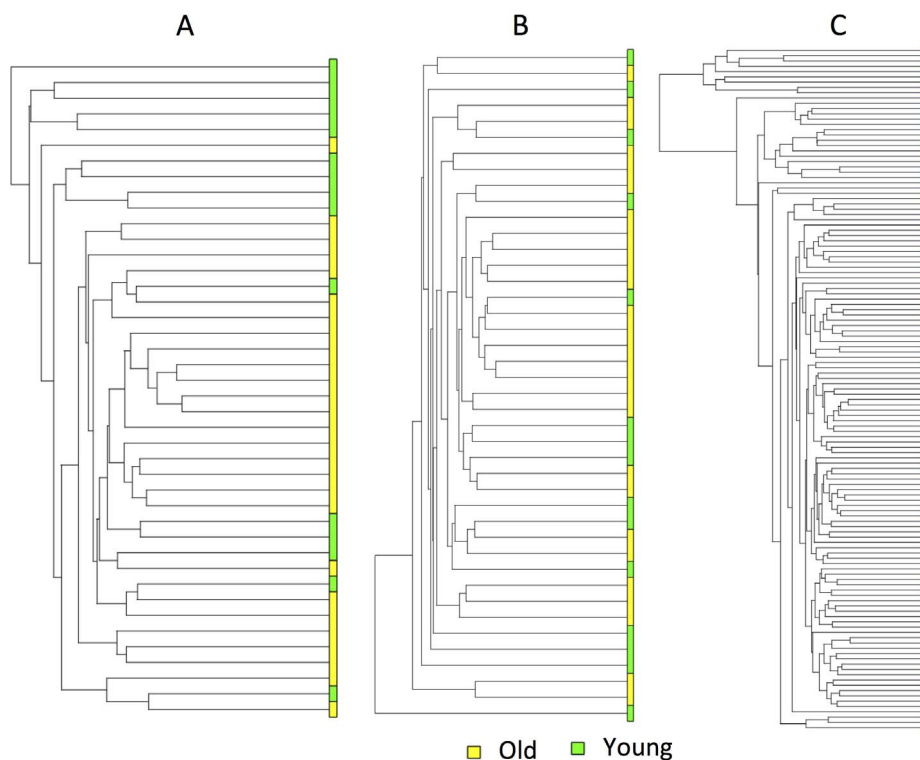


Figure 4. Hierarchical clustering of GBM samples in the REMBRANDT and TCGA data sets. (A) Clustering of old and young REMBRANDT GBM samples based on the expression profiles of age-specific genes derived from both TCGA Affymetrix U133A and Agilent G4502A data sets. (B) Clustering of old and young REMBRANDT GBM samples based on the expression profiles of all genes in the REMBRANDT data set. (C) Clustering of the old and young TCGA GBM samples based on the expression profiles of age-specific genes derived from both TCGA Affymetrix U133A and Agilent G4502A data sets.

doi:10.1371/journal.pone.0062982.g004

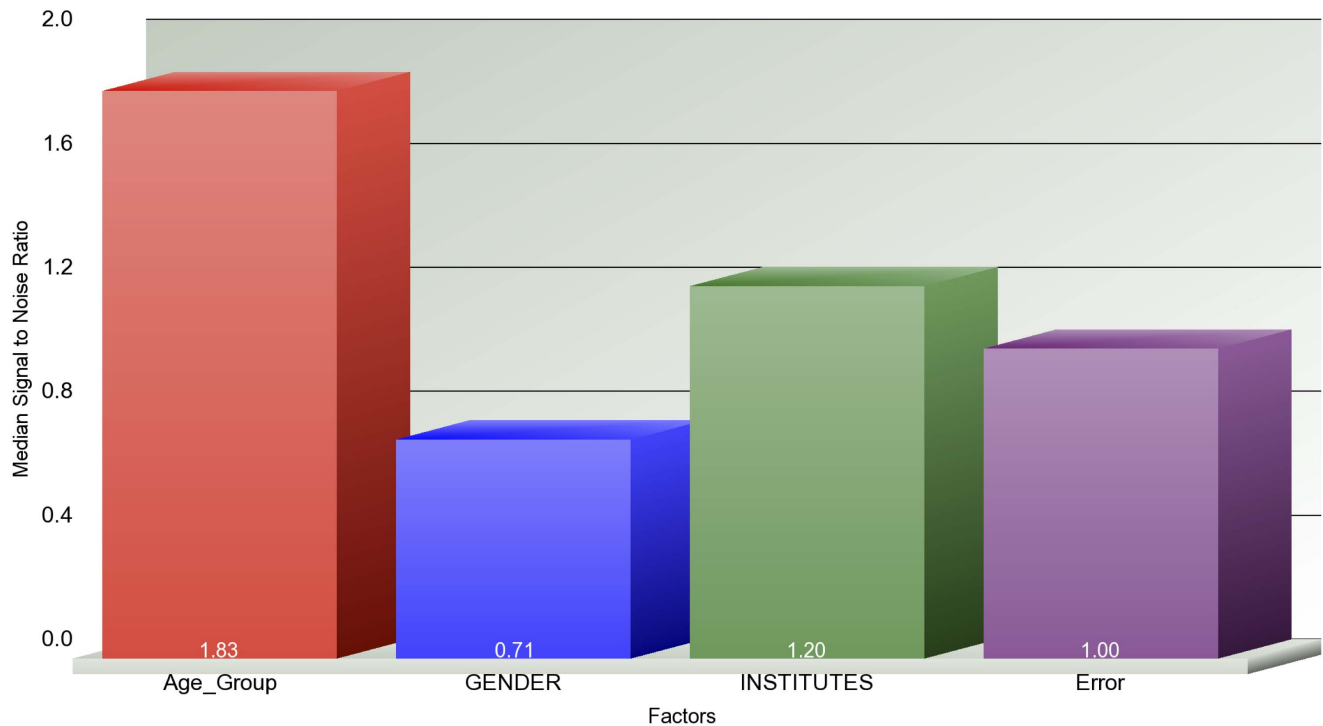


Figure 5. Source of variation of expression profiles of age-specific genes in the REMBRANDT data set. The x-axis shows the components of the 3-way ANOVA model and the y-axis shows the median signal to noise ratio. The ANOVA model is built based on the expression profiles of the TCGA age-specific genes in REMBRANDT data set. The TCGA age-specific genes are the intersection of DEGs computed on TCGA Affymetrix U133A and Agilent G4502A data sets.
doi:10.1371/journal.pone.0062982.g005

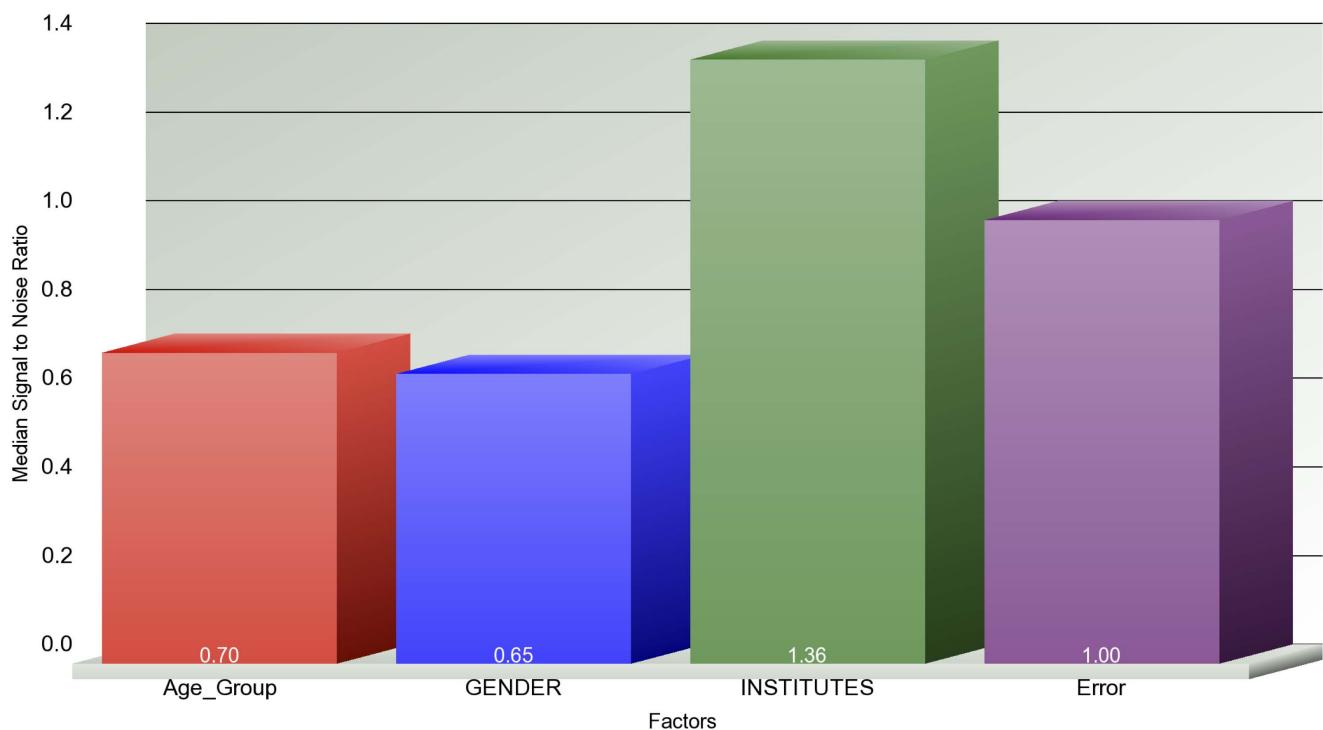


Figure 6. Source of variation of expression profiles of all genes in the REMBRANDT data set. The x-axis shows the components of the 3-way ANOVA model and the y-axis shows the median signal to noise ratio. The ANOVA model is built based on the expression profiles of all genes in REMBRANDT data set.
doi:10.1371/journal.pone.0062982.g006

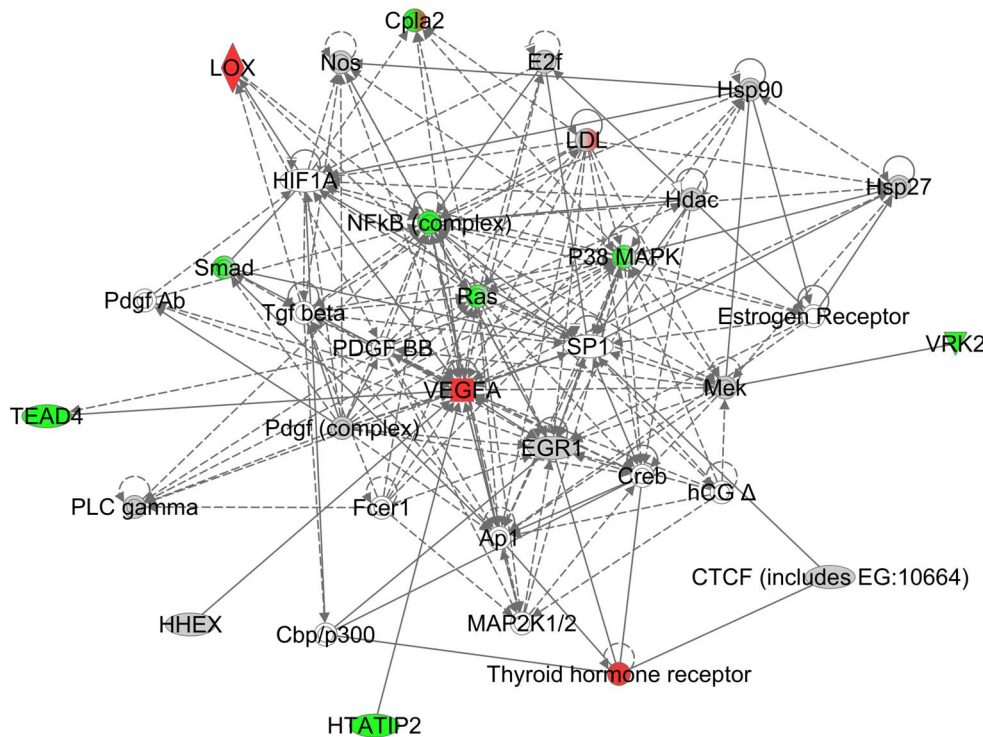


Figure 7. IPA network of angiogenesis-related genes. Node color represents the expression status based on Affymetrix U133A data set (Red: Upregulated in old GBMs, Green: Downregulated in old GBMs, Gray: Baseline, White: Unknown, Mix of green and red: both upregulated and downregulated genes in the complex). doi:10.1371/journal.pone.0062982.g007

the effect of age on survival. Recently, however, the G-CIMP positive subgroup of the proneural subtype of GBM was described based on a pattern of differential genomic methylation [22]. G-CIMP positive GBM patients tend to be younger and have a significantly longer survival than the G-CIMP negative GBMs thus accounting for some of the age-associated effects on survival [22]. Nevertheless, our data demonstrates that age remains a powerful predictor of survival amongst G-CIMP negative tumors. Thus, we sought to elucidate a biological basis for this age-related effect. To do so, we integrated the high-throughput transcriptomic, genetic, and epigenetic profiles of about 425 GBM samples in the TCGA project to find age-specific signatures at the transcriptional, genetic, and epigenetic levels and found such differences at all levels.

We observed a relative small number of DAGs that consistently differentiated old versus young GBMs. Specifically we found that chromosome 10 deletion and chromosome 7 amplification was found commonly in the old group whereas there was a relatively high frequency of chromosome 1q amplification in the young group, observations that have been previously reported in a study that compared a cohort of pediatric GBMs with adult GBMs [41].

In contrast to the relatively few consistent genomic changes between each group of tumors, we did observe a large age-specific signature at the transcriptional level. We observed a major overlap between the DEGs found in Affymetrix U133A and Agilent G4502A platforms, although not surprisingly, each platform had unique DEGs as described in [45]. We observed fewer DEGs on the Affymetrix Human Exon 1.0 platform possible due to the lower sample size in this platform.

We applied 10-fold cross validation on TCGA U133A data set to validate age-specific DEGs. We applied the SVM algorithm to build a model based on age-specific DEGs of training samples and

applied this model to predict old/young status of the test samples. This model achieved over 77% prediction accuracy whereas a model based on molecular subtype-specific DEGs only achieved 64% accuracy.

We also validated age-specific signatures at the transcriptional level on an external data set. We obtained G-CIMP negative old and young GBM samples from the REMBRANDT database and clustered these samples based on the TCGA age signature genes and all genes. The clustering results showed that the TCGA age signature could separate the old and young REMBRANDT samples as well as it separates the old and young TCGA samples. We also showed that when the TCGA age signature was selected in the REMBRANDT data set, the majority of the variation could be explained by age group (i.e., old and young). The age group, however, could not explain the variation on the entire REMBRANDT data set. We also showed that the upregulated (downregulated) TCGA DEGs are also upregulated (downregulated) in REMBRANDT data set. These findings indicate that the TCGA age-specific signature at the transcriptional level is also age-specific in REMBRANDT data set.

We also observed a large age-specific signature at the epigenetic level. In particular, we found that about 98% of the DMGs between the old and young group are hypermethylated in the old group. There are several studies that show that aging increases methylation of DNA including cancer-related genes [38,46–48]. The hypermethylated genes in the old group enriched for PCGTs that are known to be undergo methylation with aging [38]. It has been also shown that PCGTs in stem cells undergo hypermethylation with aging and this methylation locks the cell in an undifferentiated state. Thus, our results are consistent with the cancer stem cell hypothesis of gliomagenesis being most prevalent in the older GBMs, in part through hypermethylation of PCGTs.

Obviously, such a hypothesis awaits further experimental validation, as do the significance and meaning of our other age-specific epigenetic signatures.

The primary focus of this study was to identify the significant genomic, genetic and epigenetic signatures between young and old GBMs for hypothesis generation and future study and although the annotation and the biological significance of these changes are well beyond the scope of this manuscript, there is one striking observation worth noting. We found a significant number of genes involved in the hypoxic response and in angiogenesis deregulated in older GBMs compared to younger GBMs. In particular, we found a remarkable number of genes involved in the regulation of the proangiogenic protein, VEGF, deregulated in the older GBMs. This is consistent with older pathology-based studies that have demonstrated VEGF to be more highly expressed in older GBMs than in younger GBMs. Examples of the genes we found deregulated at the expression level or through transcriptional factor motif activation in older GBM that contribute to VEGF expression include HIF, HHEX, EGR1, CTCF, HTATIP2, lox, and DLK1.

To better elucidate the potential angiogenesis-related signaling aberrations found in older GBMs, we entered into the IPA network analysis a number of the genes deregulated in older GBMs at either the transcriptional level or at the TF motif enrichment level that have been associated with angiogenesis in the literature. These genes included EGR1 [49], VEGF [50], CTCF [50], Myc [51], Mycn [52], Sp1 [53], MSX1 [54], NDRG2 [55], HTATIP2 [56], VRK2 [57], TEAD4 [58], PKRCB1 [59], HHEX [42], HIF1 [37], DLK1 [60], and Lox [37]. The resulting IPA-generated network (Figure 7) demonstrates a complex network with a number of prototypic deregulated GBM genes (i.e. HIF1A, PDGF, TGF- β , Creb, and HCG) located at key nodes. Most prominently displayed in this network is the central role of VEGF.

Thus, it appears that a key biological difference between older GBMs compared to younger GBMs is the central role of VEGF and angiogenesis signaling. Although we cannot know for certain that the more prominent angiogenic profile of older GBMs is responsible in part for the shorter survival of older patients with these tumors, there is an extensive literature linking greater angiogenic potential with decreased survival in GBMs [61–63]. Additionally, the central role of VEGF in the biology of GBMs, as determined by this computational analysis, may in part explain recently published data showing that older GBM patients benefit more from treatment with the VEGF inhibitor, bevacizumab, than do younger patients [36,64]. These clinical observations have been considered paradoxical because responses to therapy with standard cytotoxic agents were historically always greater in younger GBM patients than in older. Our analysis now gives biological rationale to these previously unexplained clinical results with bevacizumab.

In conclusion, we have demonstrated through computational analyses of high-throughput genomic data from hundreds of tumors that there are substantial and consistent biological differences between GBMs found in older patients compared to those found in younger patients. Although the ultimate biological meaning and clinical significance of many of these findings await experimental validation, it appears clear that the pro-angiogenic phenotype of older GBMs compared to younger GBMs has biological, clinical, and therapeutic significance. This finding demonstrates how computational analysis of high-throughput data of a human tumor can help explain long standing clinical observations and point the way to more rationale therapeutics targeted to a specific biological process in selected patients.

Supporting Information

Figure S1 Histogram of survival days of samples for each age bin.

(TIFF)

Figure S2 Histogram of number of samples for each age bin.

(TIFF)

Figure S3 The comparison of copy number/SNP samples obtained from different institutes in the TCGA project. MSKCC: Agilent Human Genome CGH Microarray 244A (Memorial Sloan-Kettering Cancer Center), BI: Affymetrix Genome-Wide Human SNP Array 6.0 (Broad Institute of MIT and Harvard), HAIB: Illumina 550 K Infinium HumanHap550 SNP Chip (HudsonAlpha Institute for Biotechnology).

(TIFF)

Table S1 Survival analysis of GBM in randomized phase trials.

(XLS)

Table S2 Sample IDs for each data type used in this study.

(XLSX)

Table S3 Cox multivariate analysis results for survival. P-values ≤ 0.05 are bold faced.

(XLSX)

Table S4 List of differentially expressed genes found by standard linear regression (FDR ≤ 0.05).

(XLSX)

Table S5 Experimentally validated targets of the differentially expressed miRs between the old and young GBMs.

(XLSX)

Table S6 List of differentially methylated genes found by ranked-based regression (FDR ≤ 0.05).

(XLSX)

Table S7 List of differentially methylated genes that are polycomb group protein target genes.

(XLSX)

Table S8 List of genes that undergo hypermethylation only in GBMs.

(XLSX)

Table S9 List of differentially methylated genes that have been reported to undergo hypermethylation in cancer in Pubmeth database.

(XLSX)

Table S10 List of genes that are differentially expressed (Agilent and Affymetrix U133A platforms) and methylated with respect to age.

(XLSX)

Table S11 List of differentially altered genes between Old and Young on different data sets.

(XLSX)

Table S12 Pearson and Spearman Rank Correlation between HHEX and VEGFA expression on Affymetrix U133A, Agilent G4502A, and Affymetrix Human Exon platforms. For all correlations, p-values are significant (p ≤ 0.05)

(XLSX)

Table S13 List of genes that are (a) deleted and downregulated (b) amplified and upregulated in the old group. DAGs are computed from SNP 6 platform. DEGs are the intersection of genes found in Affymetrix U133A and Agilent G4502A platforms. (XLSX)

Table S14 List of enriched motifs in the promoter regions of the differentially expressed genes appear in both Affymetrix U133A and Agilent G4502A platforms. FDR(BH): Benjamini-Hochberg FDR value (XLSX)

Table S15 GSEA results on old vs. young genes. NES: normalized enrichment score. Gene sets with negative (positive) enrichment scores are active in young (old) group. (XLSX)

References

- Adamson C, Kanu OO, Mehta AI, Di C, Lin N, et al. (2009) Glioblastoma multiforme: a review of where we have been and where we are going. *Expert opinion on investigational drugs* 18: 1061–1083.
- Ohgaki H, Kleihues P (2005) Epidemiology and etiology of gliomas. *Acta neuropathologica* 109: 93–108.
- Beroukhi R, Mermel CH, Porter D, Wei G, Raychaudhuri S, et al. (2010) The landscape of somatic copy-number alteration across human cancers. *Nature* 463: 899–905.
- Cancer Genome Atlas Research Network (2008) Comprehensive genomic characterization defines human glioblastoma genes and core pathways. *Nature* 455: 1061–1068.
- Kotliarov Y, Steed ME, Christopher N, Walling J, Su Q, et al. (2006) High-resolution global genomic survey of 178 gliomas reveals novel regions of copy number alteration and allelic imbalances. *Cancer Research* 66: 9428–9436.
- Li A, Walling J, Ahn S, Kotliarov Y, Su Q, et al. (2009) Unsupervised analysis of transcriptomic profiles reveals six glioma subtypes. *Cancer Research* 69: 2091–2099.
- Liang Y, Diehn M, Watson N, Bollen AW, Aldape KD, et al. (2005) Gene expression profiling reveals molecularly and clinically distinct subtypes of glioblastoma multiforme. *Proceedings of the National Academy of Sciences of the United States of America* 102: 5814–5819.
- Mischel PS, Shai R, Shi T, Horvath S, Lu K, et al. (2003) Identification of molecular subtypes of glioblastoma by gene expression profiling. *Oncogene* 22: 2361–2373.
- Murat A, Migliavacca E, Gorlia T, Lambiv WL, Shay T, et al. (2008) Stem cell-related “self-renewal” signature and high epidermal growth factor receptor expression associated with resistance to concomitant chemoradiotherapy in glioblastoma. *Journal of clinical oncology: official journal of the American Society of Clinical Oncology* 26: 3015–3024.
- Nutt CL, Mani DR, Betensky RA, Tamayo P, Cairncross JG, et al. (2003) Gene expression-based classification of malignant gliomas correlates better with survival than histological classification. *Cancer Research* 63: 1602–1607.
- Phillips HS, Kharbanda S, Chen R, Forrest WF, Soriano RH, et al. (2006) Molecular subclasses of high-grade glioma predict prognosis, delineate a pattern of disease progression, and resemble stages in neurogenesis. *Cancer Cell* 9: 157–173.
- Ruano Y, Mollejo M, Ribalta T, Fiaño C, Camacho FI, et al. (2006) Identification of novel candidate target genes in amplicons of Glioblastoma multiforme tumors detected by expression and CGH microarray profiling. *Molecular cancer* 5: 39.
- Shai R, Shi T, Kremen T, Horvath S, Liao L, et al. (2003) Gene expression profiling identifies molecular subtypes of gliomas. *Oncogene* 22: 4918–4923.
- Tso CL, Freije WA, Day A, Chen Z, Merriman B, et al. (2006) Distinct transcription profiles of primary and secondary glioblastoma subgroups. *Cancer Research* 66: 159–167.
- Verhaak RG, Hoadley KA, Purdom E, Wang V, Qi Y, et al. (2010) Integrated genomic analysis identifies clinically relevant subtypes of glioblastoma characterized by abnormalities in PDGFRA, IDH1, EGFR, and NF1. *Cancer Cell* 17: 98–110.
- Lee Y, Scheck A, Cloughesy T, Lai A, Dong J, et al. (2008) Gene expression analysis of glioblastomas identifies the major molecular basis for the prognostic benefit of younger age. *BMC Medical Genomics* 1: 52.
- Simpson JR, Horton J, Scott C, Curran WJ, Rubin P, et al. (1993) Influence of location and extent of surgical resection on survival of patients with glioblastoma multiforme: results of three consecutive Radiation Therapy Oncology Group (RTOG) clinical trials. *International journal of radiation oncology, biology, physics* 26: 239–244.
- Buckner JC, Ballman KV, Michalak JC, Burton GV, Cascino TL, et al. (2006) Phase III trial of carmustine and cisplatin compared with carmustine alone and standard radiation therapy or accelerated radiation therapy in patients with glioblastoma multiforme: North Central Cancer Treatment Group 93-72-52 and Southwest Oncology Group 9503 Trials. *Journal of clinical oncology: official journal of the American Society of Clinical Oncology* 24: 3871–3879.
- Halperin EC, Herndon J, Schold SC, Brown M, Vick N, et al. (1996) A phase III randomized prospective trial of external beam radiotherapy, mitomycin C, carmustine, and 6-mercaptopurine for the treatment of adults with anaplastic glioma of the brain. *CNS Cancer Consortium. International journal of radiation oncology, biology, physics* 34: 793–802.
- Stewart LA (2002) Chemotherapy in adult high-grade glioma: a systematic review and meta-analysis of individual patient data from 12 randomised trials. *Lancet* 359: 1011–1018.
- Gorlia T, van den Bent MJ, Hegi ME, Mirmanoff RO, Weller M, et al. (2008) Nomograms for predicting survival of patients with newly diagnosed glioblastoma: prognostic factor analysis of EORTC and NCIC trial 26981-22981/CE.3. *The lancet oncology* 9: 29–38.
- Noushmehr H, Weisenberger D, Dieckes K, Phillips HS, Pujara K, et al. (2010) Identification of a CpG island methylator phenotype that defines a distinct subgroup of glioma. *Cancer Cell* 17: 510–522.
- R Development Core Team (2008) R: A Language and Environment for Statistical Computing. Vienna Austria R Foundation for Statistical Computing 1: ISBN 3-0.
- BioDiscovery I (2009) Locating Significantly Different CNV Regions between Two Groups.
- Andersen P, Gill R (1982) Cox's regression model for counting processes: a large sample study. *The annals of statistics* 1100–1120.
- Mootha VK, Lindgren CM, Eriksson KF, Subramanian A, Sihag S, et al. (2003) PGC- α -responsive genes involved in oxidative phosphorylation are coordinately downregulated in human diabetes. *Nature genetics* 34: 267–273.
- Subramanian A, Tamayo P, Mootha VK, Mukherjee S, Ebert BL, et al. (2005) Gene set enrichment analysis: a knowledge-based approach for interpreting genome-wide expression profiles. *Proceedings of the National Academy of Sciences of the United States of America* 102: 15545–15550.
- Dennis G, Sherman BT, Hosack DA, Yang J, Gao W, et al. (2003) DAVID: Database for Annotation, Visualization, and Integrated Discovery. *Genome Biology* 4: P3.
- Zambelli F, Pesole G, Pavesi G (2009) Pscan: finding over-represented transcription factor binding site motifs in sequences from co-regulated or co-expressed genes. *Nucleic acids research* 37: W247–252.
- Portales-Casamar E, Thongjuea S, Kwon AT, Arenillas D, Zhao X, et al. (2010) JASPAR 2010: the greatly expanded open-access database of transcription factor binding profiles. *Nucleic acids research* 38: D105–110.
- Benjamini Y, Yekutieli D (1995) Controlling the false discovery rate: a practical and powerful approach to multiple testing. *Annals of Statistics* 29: 1165–1188.
- Gibbs JR, van der Brug MP, Hernandez DG, Traynor BJ, Nalls MA, et al. (2010) Abundant Quantitative Trait Loci Exist for DNA Methylation and Gene Expression in Human Brain. *PLoS Genet* 6: e1000952.
- Lafaille J, Everhard S, Idhah A, Crinière E, Marie Y, et al. (2011) Methylation profiling identifies 2 groups of gliomas according to their tumorigenesis. *Neuro-Oncology* 13: 84–98.
- Katoh M (2005) WNT/PCP signaling pathway and human cancer (review). *Oncology reports* 14: 1583–1588.
- Dweep H, Sticht C, Pandey P, Gretz N (2011) miRWalk - Database: Prediction of possible miRNA binding sites by “walking” the genes of three genomes. *Journal of biomedical informatics*.
- Nghiengphu PL, Liu W, Lee Y, Than T, Graham C, et al. (2009) Bevacizumab and chemotherapy for recurrent glioblastoma: a single-institution experience. *Neurology* 72: 1217–1222.
- Pez F, Dayan F, Durivault J, Kaniewski B, Aimond G, et al. (2011) The HIF-1-inducible lysyl oxidase activates HIF-1 via the Akt pathway in a positive

Acknowledgments

The authors would like to thank the TCGA team for providing somatic mutations from whole-exome sequence data.

Author Contributions

Conceived and designed the experiments: SB HAF. Performed the experiments: SB AL GR YK MB FMI MCC SK. Analyzed the data: SB AL GR YK MB FMI MCC SK. Wrote the paper: SB HAF.

- regulation loop and synergizes with HIF-1 in promoting tumor cell growth. *Cancer Research* 71: 1647–1657.
38. Teschendorff AE, Menon U, Gentry-Maharaj A, Ramus SJ, Weisenberger D, et al. (2010) Age-dependent DNA methylation of genes that are suppressed in stem cells is a hallmark of cancer. *Genome Research* 20: 440–446.
 39. Hernandez D, Nalls M, Gibbs J, Arepalli S, Van Der Brug M, et al. (2011) Distinct DNA methylation changes highly correlated with chronological age in the human brain. *Human molecular genetics* 20: 1164–1172.
 40. Ongenaert M, Van Neste L, De Meyer T, Menschaert G, Bekaert S, et al. (2008) PubMeth: a cancer methylation database combining text-mining and expert annotation. *Nucleic acids research* 36: D842–846.
 41. Paugh B, Qu C, Jones C, Liu Z, Adamowicz-Brice M, et al. (2010) Integrated Molecular Genetic Profiling of Pediatric High-Grade Gliomas Reveals Key Differences With the Adult Disease. *Journal of Clinical Oncology* 28: 3061–3068.
 42. Noy P, Williams H, Sawasichai A, Gaston K, Jayaraman PS (2010) PRH/Hhex controls cell survival through coordinate transcriptional regulation of vascular endothelial growth factor signaling. *Molecular and cellular biology* 30: 2120–2134.
 43. Stein S, Linn MW, Stein EM (1989) Psychological correlates of survival in nursing home cancer patients. *The Gerontologist* 29: 224–228.
 44. Wedding U, Honecker F, Bokemeyer C, Pientka L, Höflken K (2007) Tolerance to chemotherapy in elderly patients with cancer. *Cancer control : journal of the Moffitt Cancer Center* 14: 44–56.
 45. Tan PK, Downey TJ, Spitznagel EL, Xu P, Fu D, et al. (2003) Evaluation of gene expression measurements from commercial microarray platforms. *Nucleic acids research* 31: 5676–5684.
 46. Ahuja N, Issa JP (2000) Aging, methylation and cancer. *Histology and histopathology* 15: 835–842.
 47. Ahuja N, Li Q, Mohan AL, Baylin SB, Issa JP (1998) Aging and DNA methylation in colorectal mucosa and cancer. *Cancer Research* 58: 5489–5494.
 48. Fraga MF, Esteller M (2007) Epigenetics and aging: the targets and the marks. *Trends in genetics: TIG* 23: 413–418.
 49. Kim JH, Choi DS, Lee OH, Oh SH, Lippman SM, et al. (2011) Antiangiogenic antitumor activities of IGFBP-3 are mediated by IGF-independent suppression of Erk1/2 activation and Egr-1-mediated transcriptional events. *Blood* 118: 2622–2631.
 50. Tang M, Chen B, Lin T, Li Z, Pardo C, et al. (2011) Restraint of angiogenesis by zinc finger transcription factor CTCF-dependent chromatin insulation. *Proceedings of the National Academy of Sciences of the United States of America* 108: 15231–15236.
 51. Baudino TA, McKay C, Pendeville-Samain H, Nilsson JA, Maclean KH, et al. (2002) c-Myc is essential for vasculogenesis and angiogenesis during development and tumor progression. *Genes & development* 16: 2530–2543.
 52. Kang J, Rychahou PG, Ishola TA, Mourot JM, Evers BM, et al. (2008) N-myc is a novel regulator of PI3K-mediated VEGF expression in neuroblastoma. *Oncogene* 27: 3999–4007.
 53. Li ZY, Zhu F, Hu JL, Peng G, Chen J, et al. (2011) Sp1 inhibition-mediated upregulation of VEGF 165 b induced by rh-endostatin enhances antiangiogenic and anticancer effect of rh-endostatin in A549. *Tumour biology: the journal of the International Society for Oncodevelopmental Biology and Medicine* 32: 677–687.
 54. Lee H-H, Park K, Choi K (2009) Novel agent that inhibits angiogenesis and metastasis targeting mtor signaling pathway.
 55. Liu S, Yang P, Kang H, Lu L, Zhang Y, et al. (2011) NDRG2 induced by oxidized LDL in macrophages antagonizes growth factor productions via selectively inhibiting ERK activation. *Biochimica et biophysica acta* 1801: 106–113.
 56. NicAmhlaoibh R, Shtivelman E (2001) Metastasis suppressor CC3 inhibits angiogenic properties of tumor cells in vitro. *Oncogene* 20: 270–275.
 57. Blanco S, Santos C, Lazo PA (2007) Vaccinia-related kinase 2 modulates the stress response to hypoxia mediated by TAK1. *Molecular and cellular biology* 27: 7273–7283.
 58. Lux A, Salway F, Dressman HK, Kröner-Lux G, Hafner M, et al. (2006) ALK1 signalling analysis identifies angiogenesis related genes and reveals disparity between TGF-beta and constitutively active receptor induced gene expression. *BMC cardiovascular disorders* 6: 13.
 59. He LF, Wang TT, Gao QY, Zhao GF, Huang YH, et al. (2011) Stanniocalcin-1 promotes tumor angiogenesis through up-regulation of VEGF in gastric cancer cells. *Journal of biomedical science* 18: 39.
 60. Rodríguez P, Higuera MA, González-Rajal A, Alfranca A, Fierro-Fernández M, et al. (2011) The non-canonical NOTCH ligand DLK1 exhibits a novel vascular role as a strong inhibitor of angiogenesis. *Cardiovascular research* 93: 232–241.
 61. Chi AS, Sorensen AG, Jain RK, Batchelor TT (2009) Angiogenesis as a therapeutic target in malignant gliomas. *The oncologist* 14: 621–636.
 62. Kaur B, Tan C, Brat DJ, Post DE, Van Meir EG (2004) Genetic and hypoxic regulation of angiogenesis in gliomas. *Journal of neuro-oncology* 70: 229–243.
 63. Kesari S (2011) Understanding glioblastoma tumor biology: the potential to improve current diagnosis and treatments. *Seminars in oncology* 38 Suppl 4: S2–10.
 64. Kreisl TN, Kim L, Moore K, Duic P, Royce C, et al. (2009) Phase II trial of single-agent bevacizumab followed by bevacizumab plus irinotecan at tumor progression in recurrent glioblastoma. *Journal of clinical oncology: official journal of the American Society of Clinical Oncology* 27: 740–745.