

10-1-1993

# In Deed: A Survey of Programs and Activities Related to Identity and Mission: Saint Louis University

Editorial Board

Follow this and additional works at: <http://epublications.marquette.edu/conversations>

---

### Recommended Citation

Editorial Board (1993) "In Deed: A Survey of Programs and Activities Related to Identity and Mission: Saint Louis University," *Conversations on Jesuit Higher Education*: Vol. 4, Article 8.  
Available at: <http://epublications.marquette.edu/conversations/vol4/iss1/8>

and high-risk obstetrics will open this fall. The Medical Center's HIV Clinical Program recently has been designated one of only 28 AIDS clinical trial sites in the nation. The Institute of Health Care Research and Policy also has been launched to focus on health-care financing, health status and outcomes, provider practices, and technology assessment. Medical students are involved in providing free medical care to the homeless, working in migrant camps, serving as mentors to DC teens interested in health careers, working at an AIDS hospice, teaching good health habits to DC first graders. Finally, the Medical Center has launched "Caring for the

Body, the Mind and the Soul: the Jesuit Tradition and Medicine," a pair of annual lectures presented by distinguished Jesuits for the whole university community.

### **Law Center Activities**

The innovations of Georgetown Law Center's approach to the study of law are most evident in its clinical education programs. Nearly 300 law students each year combine study with practice in the fields of clinical legal education and public interest advocacy. Students defend indigents in misdemeanor, felony, and juvenile cases; assist in drafting federal legislation; represent grass-roots community

organizations as well as underrepresented groups, in areas such as civil rights and immigration law. Outside the classroom, Georgetown outreach channels the talents and interests of law students with various community organizations.

### **Georgetown's Identity**

University Chaplain John Breslin SJ is working with faculty and staff on all three campuses to promote a dialogue on Georgetown's identity and nature as a Catholic, Jesuit institution. This past spring, the university organized and hosted a national symposium on *Ex Corde Ecclesiae*, Pope John Paul II's apostolic constitution on

Catholic universities. The two-day dialogue brought together scholars, lawyers, clergy, and religious to discuss implications of the document for the American context. Ongoing campus activities include days of recollection, dinner discussions and celebrations, including the centenary of historic Dahlgren Chapel and the Mass of the Holy Spirit to mark the opening of the academic year. The Jesuit community, too, brings together new and returning faculty and students in dialogue on the character and functions of Georgetown now and for the future.

## **Saint Louis University**

*St. Louis, Missouri*

As the second oldest Jesuit university in the United States, and the first Catholic university in this country to form a graduate school and schools of law, medicine, philosophy, and divinity, and an honors program, Saint Louis University takes seriously its commitment to education and to "academic excellence under the inspiration of the Christian faith." It seeks to carry out this commitment, as the university's statement of its philosophy puts it, "by providing an environment in which the intellectual, emotional, imaginative, technical, social, religious, and spiritual abilities of students are nurtured and strengthened." Such development is in keeping with the Jesuit mission in education. In pursuit of that

mission, the university in 1988 appointed an assistant to the president specifically for mission and ministry.

### **Learning and Serving Others**

This fall, the university brings education and service together more closely than it

ever has before. A new academic program, SLU-Vision, offers courses through the philosophy and theology departments that simultaneously focus on serious learning in those disciplines, and on field work that accompanies the classroom time. A connection is made between the worlds inside and outside the univer-

sity as students discover in depth the meaning of and the means to "the service of faith and the promotion of justice." The program is similar to one already in place at Boston College. For the present only those who have received scholarships in either of the two university programs that directly reward service are eligible to participate in the SLU-Vision program. Those two scholarships, the Ignatian and Calloway Scholarships, are major commitments by the university to recognize incoming students who make serving others a high priority.

### **New Initiatives**

Four new ventures of the last two years strengthen the university in its mission. First, the Centre for Com-

Liturgy on campus at Saint Louis University.



munication and Culture, internationally staffed and operated by the Jesuits, has relocated from London to the St. Louis campus. The Centre was established in 1977 by then-Father General Pedro Arrupe SJ to engage in research and reflection on communication topics relevant to the modern Church. The Renaissance Center brings together cooperatively and thus strengthens several of the humanities programs at the university, helping also to develop several of the interdisciplinary graduate programs in the humanities. The new Museum of Contemporary Religious Art (MOCRA), the only ecumenical museum of its kind in the world, opened in February 1993. Its goal is to build bridges of understanding between religions while providing a contemporary forum for artists. Finally, the Center for Liturgy, directed by the theologian and composer John Foley SJ, will act to explore nationally the theological significance of liturgy after Vatican II and to serve as an educational resource for liturgical reform in parishes.

### **A Mission with a Difference**

As part of the endeavor to give the entire university community the opportunity to share as fully as possible in what the institution is about, every new faculty and staff member views "Saint Louis University: A Mission Making a Difference," a video which explores the Jesuit character and nature of the university. In addition, since 1986 the Pastoral Care Department at the University Hospital has conducted a program on the Jesuit identity and mission of the hospi-

tal, which includes screenings of a special video, "The Touch of the Master's Hand."

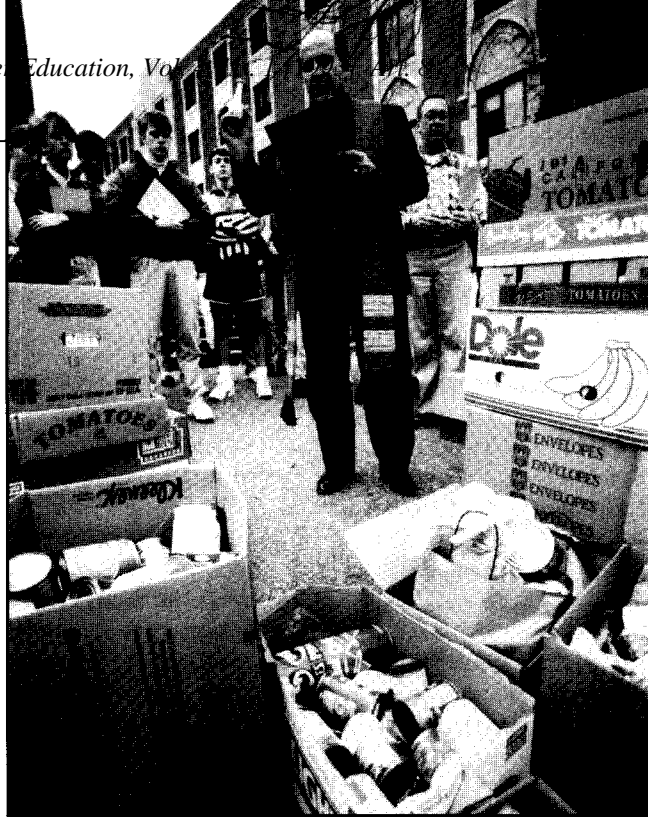
Several other programs have been established to help university colleagues realize their contribution to the mission of the school. These include mission in-service days of reflection; the BEST (Building Excellence with Spirit and Tradition) program; a module on mission and ministry during training and orientation programs for students, faculty/staff, and trustees; and the semiannual Dean's Seminar on Jesuit education. The 19th-Annotation Retreat and Bridges program also are offered to faculty and staff, as are several other retreat programs.

### **Community Involvement**

Nearly every department or school is involved in direct community service. A brief rundown:

CAMPUS (the Central American Program of Undergraduate Scholarships) provides academic opportunities to young Latin American students of limited financial means. The Student Volunteer Programs, to take another example, is the only fully staffed, full-time student volunteer office in Missouri. Through it, a multitude of student volunteer opportunities are coordinated, managed and supported. More than 23,000 hours of such service were volunteered last year.

The university's office of student-volunteer programs recently established the Paul Reinert SJ Community Service Award, presented to a student who volunteers 200 or more hours during the academic year. The award is named for the university's chancellor emeritus, who has served on numerous civic, re-



Rev. Lawrence Biondi SJ, president of Saint Louis University, blessing food donated for the Thanksgiving food drive for the poor.

ligious, and educational organizations and was instrumental in forming the university's student-volunteer office.

The Medical Center provides some \$22 million in indigent care each year. The Saint Louis University Hospital Response to Community Violence (HRCV) explores practical ways for emotionally and physically supporting victims of gang violence. The Center for Health Care Ethics is an internationally known program which researches and reflects on the complex issues of modern health care.

The Psychological Service Center is the largest private provider of mental-health services in Missouri. The Law School offers five separate clinics for the disadvantaged. The School of Business and Administration operates six centers to serve the public; Parks College manages a teacher-resource center, which helps secondary-school teachers use aviation in their teaching. Internal to the university community itself, "Helping Our Own" is a program to provide monetary

support for university employees facing financial emergencies. Employees can contribute personally to the fund through payroll deduction.

And finally, in cooperation with another Jesuit institution, the two Jesuit colleges in the state of Missouri, Saint Louis University and Rockhurst College, jointly operate a campus in Kansas City, Mo., with courses tailored for adult part-time students. The venture epitomizes the Jesuit commitment to provide relevant, value-based higher education beyond the wall of any one institution, as a service to a larger community.

### **Mission in Deed**

In all of these structures, the university seeks to fulfill in deed its statement that "the mission of Saint Louis University is the pursuit of truth for the greater glory of God and for the service of humanity, ... motivated by the inspiration and values of the Judaeo-Christian tradition and ... guided by the spiritual and intellectual ideals of the Society of Jesus."