

Marquette University

e-Publications@Marquette

Biological Sciences Faculty Research and
Publications

Biological Sciences, Department of

6-27-2012

Repeated Origin and Loss of Adhesive Toepads in Geckos

Tony Gamble

Marquette University, anthony.gamble@marquette.edu

Eli Greenbaum

University of Texas - El Paso

Todd R. Jackman

Villanova University

Anthony P. Russell

University Department of Calgary

Aaron M. Bauer

Villanova University

Follow this and additional works at: https://epublications.marquette.edu/bio_fac



Part of the [Biology Commons](#)

Recommended Citation

Gamble, Tony; Greenbaum, Eli; Jackman, Todd R.; Russell, Anthony P.; and Bauer, Aaron M., "Repeated Origin and Loss of Adhesive Toepads in Geckos" (2012). *Biological Sciences Faculty Research and Publications*. 766.

https://epublications.marquette.edu/bio_fac/766

Repeated Origin and Loss of Adhesive Toepads in Geckos

Tony Gamble^{1,2}, Eli Greenbaum^{3,✉}, Todd R. Jackman³, Anthony P. Russell⁴, Aaron M. Bauer^{3*}

1 Department of Genetics, Cell Biology and Development, University of Minnesota, Minneapolis, Minnesota, United States of America, **2** Bell Museum of Natural History, University of Minnesota, St. Paul, Minnesota, United States of America, **3** Department of Biology, Villanova University, Villanova, Pennsylvania, United States of America, **4** Department of Biological Sciences, University Department of Calgary, Calgary, Canada

Abstract

Geckos are well known for their extraordinary clinging abilities and many species easily scale vertical or even inverted surfaces. This ability is enabled by a complex digital adhesive mechanism (adhesive toepads) that employs van der Waals based adhesion, augmented by frictional forces. Numerous morphological traits and behaviors have evolved to facilitate deployment of the adhesive mechanism, maximize adhesive force and enable release from the substrate. The complex digital morphologies that result allow geckos to interact with their environment in a novel fashion quite differently from most other lizards. Details of toepad morphology suggest multiple gains and losses of the adhesive mechanism, but lack of a comprehensive phylogeny has hindered efforts to determine how frequently adhesive toepads have been gained and lost. Here we present a multigene phylogeny of geckos, including 107 of 118 recognized genera, and determine that adhesive toepads have been gained and lost multiple times, and remarkably, with approximately equal frequency. The most likely hypothesis suggests that adhesive toepads evolved 11 times and were lost nine times. The overall external morphology of the toepad is strikingly similar in many lineages in which it is independently derived, but lineage-specific differences are evident, particularly regarding internal anatomy, with unique morphological patterns defining each independent derivation.

Citation: Gamble T, Greenbaum E, Jackman TR, Russell AP, Bauer AM (2012) Repeated Origin and Loss of Adhesive Toepads in Geckos. PLoS ONE 7(6): e39429. doi:10.1371/journal.pone.0039429

Editor: Jose Castresana, Institute of Evolutionary Biology (CSIC-UPF), Spain

Received: January 17, 2012; **Accepted:** May 23, 2012; **Published:** June 27, 2012

Copyright: © 2012 Gamble et al. This is an open-access article distributed under the terms of the Creative Commons Attribution License, which permits unrestricted use, distribution, and reproduction in any medium, provided the original author and source are credited.

Funding: This research was supported by grants DEB 0515909 and DEB 0844523 from the National Science Foundation (www.nsf.gov) and by Discovery Grant 9745-2008 from the Natural Sciences and Engineering Research Council of Canada (www.nserc-crsng.gc.ca). The funders had no role in study design, data collection and analysis, decision to publish, or preparation of the manuscript.

Competing Interests: The authors have declared that no competing interests exist.

* E-mail: aaron.bauer@villanova.edu

✉ Current address: Department of Biological Sciences, University of Texas at El Paso, El Paso, Texas, United States of America

Introduction

Repeated evolution, also called convergent or parallel evolution, is the independent emergence of similar traits in separate evolutionary lineages and is typically seen as evidence of adaptation through natural selection or of developmental constraints that limit or bias morphological evolution [1,2,3,4,5]. Examining instances of repeated evolution serves as an important means of studying evolutionary processes and is analogous to studying multiple experimental replicates [6]. Indeed, each case of convergent or parallel evolution reveals the degree of common response to some fundamental biological challenge. As a result, extensive effort has been devoted to identifying instances of repeated evolution. To do this effectively, an accurate phylogeny is required for the “mapping” of traits and to permit examination of whether similarity is the result of shared ancestry or represents true independent derivation [3]. Many aspects of vertebrate body form related to locomotion have evolved repeatedly, being both gained and lost many times over. This includes functionally significant traits such as wings as aerodynamic devices, and limb reduction or elimination associated with burrowing [7,8,9]. Likewise, adhesive toepads employed in climbing have evolved several times in vertebrates, including multiple lineages of treefrogs, *Anolis* lizards, *Prasinohaema* skinks and, perhaps most notably in geckos [10,11].

The key component of the adhesive apparatus in lizards is the presence of setae, microscopic hair-like outgrowths of the superficial layer of the subdigital epidermis (the Oberhäutchen),

which promote adhesion via van der Waals forces and complex frictional interactions [12,13,14,15]. Setae evolved from the microscopic spinules that are typical of the outer epidermis of all limbed gekkotans and some other squamates [15,16,17,18], and are hypothesized to aid in skin shedding [16,19]. A hierarchy of anatomical specializations have evolved to govern the adhesive properties of the setae, and dynamic interactions with the substrate depend on numerous morphological adaptations and behaviors that facilitate control of the adhesive mechanism during locomotion [13,20,21,22,23]. Collectively, these specializations permit effective and rapid application and removal of the setae with reference to the substrate and constitute a functionally integrated complex [13,24].

Geckos are among the most species-rich and geographically widespread of terrestrial vertebrate lineages, with ~1450 described species in 118 genera, and comprise 25% of all described lizard species [25]. They are the likely sister group of all other lizards and snakes, excluding the limbless dibamids, having diverged from other squamates 225–180 MY ago [26,27]. The gekkotan adhesive system has been present since at least the mid-Cretaceous, as revealed by scansorial pads preserved in amber-embedded gecko fossils [28,29]. Approximately 60% of gecko species possess adhesive toepads, whereas the remainder lack functional adhesive toepads (or lack limbs altogether, in the case of the Australian pygopodid geckos) [7]. Geckos with adhesive toepads can easily scale vertical or even inverted surfaces, and these extraordinary clinging abilities have long attracted scientific attention [16,30,31].

Recently, interest has focused on mimicking the gecko adhesive mechanism to develop bio-inspired technologies [32,33,34]. Biomimetic studies have concentrated largely on adhesion at the molecular level, but functional control of adhesive toepads requires integration across a hierarchy of systems operating at different scales. These complex interactions – from molecular bonds to the locomotor control of the entire organism – are incorporated across seven orders of magnitude of size in geckos [13].

The form and structure of adhesive toepads in geckos have been used historically for taxonomic purposes, chiefly for assigning species to genera [35,36,37]. Traditional views of gecko evolution presupposed a single [38], or at most two [22], origins of the adhesive apparatus. These views were inferred from phylogenetic hypotheses that used few characters and sparse taxon sampling, and that placed the padless eublepharid geckos as sister to all remaining geckos, a position refuted by recent molecular phylogenies [26,27,39,40]. Reconstructing the evolution of gekkotan adhesive toepads, therefore, requires a comprehensive phylogeny derived from an independent data source, i.e., molecular genetic data. Here we estimate the phylogenetic relationships among nearly all recognized gecko genera using a multilocus dataset. We optimize the evolution of adhesive toepads on this phylogeny and reveal extensive homoplasy both in toepad morphology and in patterns of toepad loss. Our approach provides an appropriate framework for investigating broader functional and ecological questions that are associated with the origin, diversification and secondary loss of adhesive toepads. Being able to focus upon evolutionary events in different parts of the gekkotan phylogeny will permit more specific questions to be explored. In this contribution we provide exemplars of such phenomena, and consider the environmental circumstances that may have triggered particular transitions. Further explorations of similar transitions in other parts of the phylogeny will ultimately lead to potential generalizations about the form, function and adaptive significance of adhesive pad configuration in its various guises.

Methods

Phylogenetic Analyses

We estimated phylogenies using approximately 4,100 aligned bases of nucleotide data, from 244 gekkotan taxa and 14 outgroups (Table S1). The dataset was mostly complete, with only about 3% missing data. This included exemplars from 107 of 118 recognized gekkotan genera. Several recently described or elevated genera [41,42] were not sampled, but these new taxa are invariant in digital morphology in comparison to related taxa that are represented in our phylogenetic analyses. DNA sequence data consisted of fragments of five nuclear protein-coding genes: *RAG1*, *RAG2*, *C-MOS*, *ACM4*, and *PDC*; and one mitochondrial gene: *ND2* and associated tRNAs. Primers, PCR conditions, and sequencing conditions are detailed elsewhere [43,44]. Sequence data have been deposited in GenBank (Table S1). We aligned sequences using T-Coffee [45] with default parameters and fine-tuned alignments by hand to ensure insertions and deletions did not disrupt the translation of DNA sequence into amino acids. Protein-coding sequences were translated into amino acids using MacClade 4.08 [46] to confirm alignment and gap placement. Alignment gaps were treated as missing data and nuclear gene sequences were unphased. We estimated phylogenetic relationships among taxa using Maximum Likelihood (ML) in RAxML 7.2.6 [47] and Bayesian analysis in MrBayes 3.1.2 [48]. Data in both analyses were divided into seven partitions; first by genome (nDNA and mtDNA) and then by codon, with a separate partition

for tRNAs. This partitioning scheme contains fewer parameters than the preferred partitioning strategy used in previous phylogenetic analyses of the same nuclear loci (partitioning by both gene and codon), but with far fewer taxa [43,49]. The more parameter-rich strategy resulted in convergence problems in the Bayesian analysis of this taxon-rich dataset, likely due to low phylogenetic signal in the smaller partitions; these problems were resolved by reducing the number of partitions. Model selection was based on AIC scores using the software jModeltest [50], which recovered either the GTR + *I* + *G* or the GTR + *G* models for each partition (Table S2). The GTR + *G* model was used for all partitions in the ML analysis, which is the only model implemented in RAxML due to problematic interactions between the *I* and *G* parameters [51,52]. Bayesian analyses were run with multiple MCMC chains for 40 million generations, sampling every 1000th generation. Post burn-in convergence was checked by visual inspection of likelihood values by generation using Tracer 1.5 [53] and comparing split frequencies between runs using AWTY [54].

Comparative Analyses

We categorized digital morphologies in all sampled taxa as a binary character, coding species lacking a functional digital adhesive mechanism as 0 and species with a functional digital adhesive mechanism as 1 (Table S1). Morphological data were gathered from the literature as well as our personal examination of museum specimens representing 95% of described gecko species. Methods summarizing the collection of paraphalangeal data have been detailed elsewhere [21].

We estimated the number of independent gains and losses of the gekkotan digital adhesive mechanism using ancestral state reconstruction under parsimony and Maximum Likelihood in Mesquite [55], and Bayesian reconstruction in Bayestraits [56]. We incorporated phylogenetic uncertainty into our ancestral state reconstructions by summarizing ancestral states over a random subsample of 5,000 post burn-in trees from the Bayesian phylogenetic analyses onto the ML tree [57]. To investigate whether gains and losses of a functional digital adhesive mechanism occurred at the same rate in geckos, we compared the 1–rate MK1 model [58] to the asymmetric 2–rate model [59,60] with the likelihood ratio test in both the ML and Bayesian reconstructions.

Ancestral state reconstruction methods can be positively misleading if the trait in question influences diversification rates [61,62]. To correct for this artefact we used the binary-state speciation and extinction (BiSSE) model [61] to simultaneously estimate transition rates between binary characters (q_{01} and q_{10}) and state-specific extinction (μ_0 and μ_1) and speciation rates (λ_{00} and λ_{01}). We accounted for the incomplete species sampling of our phylogeny (~10% of described gekkotan species) by converting our ML phylogeny into a terminally-unresolved generic-level tree that could accommodate all unsampled taxa [63]. We pruned our phylogeny to 107 terminal taxa, roughly equivalent to genera, to which we could unambiguously assign all 1,452 described gecko species. There were several instances where multiple genera were grouped together for convenience, as well as several instances where genera were split into multiple groups due to the revelation of generic paraphyly (see results). In all cases, there were no changes in the presence or absence of adhesive toepads among impacted clades, so any influence of this taxonomic assignment on our results should be negligible. The ML phylogeny was made ultrametric using penalized likelihood in APE 2.7 [64,65] with the root arbitrarily scaled to 100. We calculated BiSSE model parameters from the ultrametric ML tree using maximum likelihood in the software Diversitree [63]. We

also tested several hypotheses regarding the evolution of the digital adhesive mechanism using a range of constrained BiSSE models. We calculated parameters for the unconstrained, six-parameter model and then sequentially constrained each of the model parameters, alone and in combination, to yield a single rate for each parameter (e.g., $\mu_0 = \mu_1$, $\lambda_0 = \lambda_1$, $q_{01} = q_{10}$) to determine if constrained models provided a better fit to the data than did the unconstrained model. We also explored whether models that restricted transitions between character states provided a realistic evaluation of our data. We did this by constraining $q_{01} = 0$, where a functional digital adhesive mechanism evolved just once; and $q_{10} = 0$, where once gained, a functional digital adhesive mechanism is never lost. We used AIC scores to determine which model provided the best fit to our data. Bayesian posterior distributions of BiSSE model parameters were also estimated using Markov Chain Monte Carlo analyses with the terminally unresolved generic-level ML tree in Diversi-tree [63]. Priors for each parameter used an exponential distribution, and estimated ML model parameters were used as a starting point. We combined results from two separate MCMC chains run for 10,000 generations each, with the first 10% of each run discarded as burn-in.

Results

Molecular phylogenies recover patterns of interfamilial relationships consistent with previous molecular studies (Fig. 1, Figs. S1–S2) [26,39,40,43]. This includes well-supported monophyly of all seven gekkotan families (Table 1, Figs. S1–S2), with both Bayesian and maximum-likelihood trees concordant at well-supported nodes. Portions of the phylogeny with short internal branches are generally poorly supported, making it difficult to resolve phylogenetic relationships among many genera. This is the case at the base of Gekkonidae, Phyllodactylidae and Sphaerodactylidae. Several recognized genera are recovered with strong support as either para- or polyphyletic: *Afrogecko*, *Cnemaspis*, *Cyrtodactylus*, *Gekko*, *Rhacodactylus* and *Saurodactylus*.

Comparative analyses using multiple methodologies reveal repeated gains and losses of adhesive toe pads (Fig. 1, Figs. S3, S4, S5 and S6). Phylogenetic uncertainty, due to short internodes, makes unambiguous ancestral state reconstructions difficult in some parts of the tree, particularly within the Gekkonidae (Fig. S4). Even so, well-resolved, strongly supported nodes across the phylogeny provide clear evidence of independent gains and losses. Reconstructing ancestral character states with parsimony (Fig. S5) across a selection of trees from the Bayesian phylogenetic analysis results in 20 transitions, with an average of 11 gains (min = 3, max = 17) and 9 losses (min = 3, max = 18). Indeed, gains and losses occur at about the same rate in all of our analyses (Fig. S6). A 1-rate transition model yields results that are not significantly different from an asymmetric 2-rate model for both maximum likelihood reconstructions (likelihood ratio test; $P = 0.4394$) and Bayesian reconstructions (Fig. S3). Similarly, the distribution of character transition rates shows considerable overlap in credibility intervals using a Bayesian implementation of the BiSSE model (Fig. 2) [61,63]. This extends to overlapping diversification rates (calculated as trait-specific speciation - extinction) among padded and padless lineages (Fig. 2). Comparing the full and constrained maximum likelihood BiSSE models (Table 2) reveals that constraints five and six best fit the data, although AIC differences among most models are small. Constraints five and six both have equal transition rates ($q_{01} = q_{10}$) and constrain either equal speciation rates (constraint 5, $\lambda_0 = \lambda_1$) or equal extinction rates (constraint 6, $\mu_0 = \mu_1$). Models that restrict

transitions between character states (i.e., constraints eight and nine where $q_{01} = 0$, $q_{10} = 0$), provide a significantly worse fit to the data than the unconstrained and remaining constrained models. All of the comparative analyses indicate that the most recent common ancestor of all geckos lacked adhesive pads. Many padless lineages retain this ancestral state (e.g., Carphodactylidae and Eublepharidae), but in many others this condition is secondarily derived (e.g., *Homonota*, *Garthia* and *Gymnodactylus*).

Discussion

Phylogenetic comparative analyses recover multiple gains and losses of adhesive toe pads in geckos. This contrasts with previous hypotheses that suggest one, or at most two origins of toe pads in geckos [22,38]. This rampant convergence and parallelism in digital design helps explain the generally poor performance of superficial digital characters for systematic purposes, particularly at higher levels of inclusiveness [22,43,66,67]. Morphological evidence for gekkotan relationships exists, but a high noise-to-signal ratio among the relatively few morphological characters that have been exploited in gecko systematics to date has hampered both phylogenetic reconstruction and the study of character evolution. Recent work using molecular systematic approaches reveals that many gecko genera, originally defined by toe pad morphology, are polyphyletic [39,68,69,70]. Here we identify three more polyphyletic genera: *Afrogecko*, *Cnemaspis* and *Rhacodactylus*. The genera *Gekko* and *Cyrtodactylus* are rendered paraphyletic by *Ptychozoon* and *Geckoella*, respectively. These results indicate that additional work at the generic level is necessary to ensure that gecko taxonomy is isomorphic with phylogeny.

The BiSSE model co-estimates character transition rates and trait-specific speciation and extinction rates, which allows for the estimation of diversification rates (speciation - extinction, Fig. 2) for lineages with and without adhesive toe pads. Whereas diversification rates in gecko lineages with toe pads are higher than in lineages lacking toe pads, these differences are small, and there is overlap in the Bayesian posterior distributions of BiSSE diversification parameters. Therefore, the presence of adhesive toe pads, on its own does not appear to have directly influenced the number of species in different gecko lineages. The lack of a direct relationship between adhesive toe pads and diversification rates in geckos highlights the complicated relationship between the evolution of complex traits, speciation and extinction. The success of geckos has been linked to possessing many derived traits including nocturnality, visual and olfactory prey discrimination, and shifts in diet, as well as adhesive toe pads [71,72,73]. That adhesive toe pads do not, on their own, explain gecko diversification rates should therefore come as no surprise. Uncovering the patterns and processes that explain the great diversity of geckos overall, as well as the disparities in species richness among gekkotan clades, is a rich source for further research that will be greatly facilitated by the comprehensive phylogeny presented here.

An unambiguous gain of adhesive toe pads from a padless ancestor is exemplified by the globally distributed genus *Hemidactylus*. The modular construction of the adhesive mechanism is evident when detailed digital morphology is compared to that of related padless genera, and when comparing the elaboration of specialized components from unspecialized precursors (Fig. 3). The likely key initial modification of the digit in *Hemidactylus*, indeed the minimum requirement necessary to possess a functional adhesive mechanism, involves the elaboration of the subdigital spinules into setae with multi-spatulate tips. Because a spinulate epidermis seems ubiquitous among limbed geckos [15,16,17,18], a setal precursor does not need to evolve *de novo* each time the

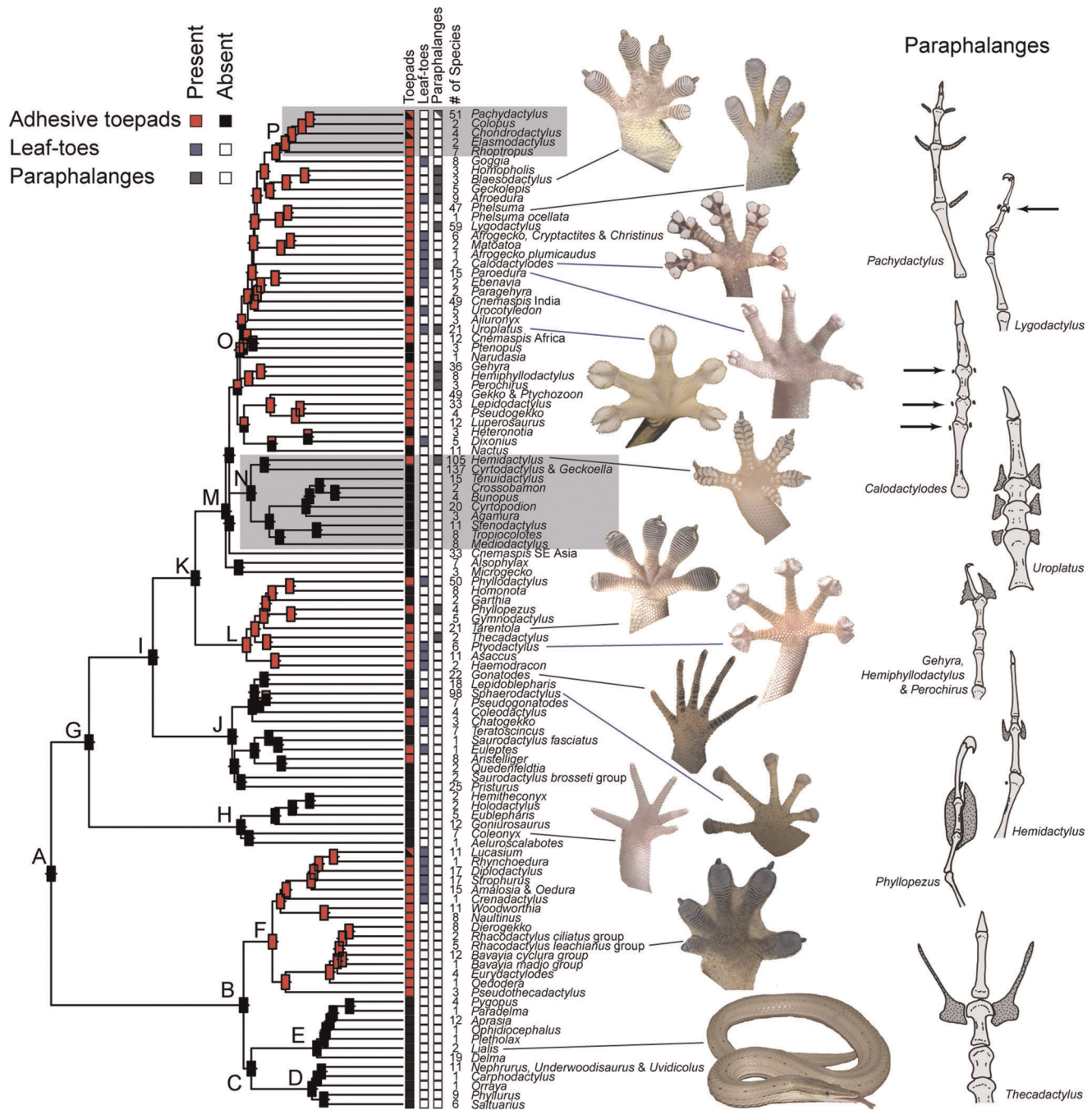


Figure 1. Gecko phylogeny and the evolution of adhesive toepads. Maximum likelihood tree showing phylogenetic relationships among gecko genera. Toepad traits, including the presence of adhesive toepads, toepad shape and the presence of paracymbria, are illustrated by colored squares on the tips of the branches (squares with two colors indicate polymorphism within the clade). Rectangles at internal nodes represent ancestral presence or absence probabilities of adhesive toepads inferred using the 6-parameter binary-state speciation and extinction (BiSSE) model. Details for lettered clades are presented in Table 1. Representative images illustrate a variety of gecko toepad morphologies. Single digits from representative gecko species illustrating the morphological diversity of paracymbria elements (in gray with stippling) are shown on the right. Clades enclosed in gray boxes are shown in greater detail in Figures 3 and 4. doi:10.1371/journal.pone.0039429.g001

adhesive mechanism evolves. Elongation of the epidermal spinules, initially likely involved in the enhancement of traction [74], influenced the ability of the integumentary outgrowths to interact with the substrate *via* van der Waals forces, promoting further setal elaboration and the subsequent integration of associated morphological traits that control the elaborated setae as a directional

adhesive complex [22]. These associated morphological traits in *Hemidactylus*, and indeed all padded gecko lineages, include a broadened subdigital surface (scansors), and modified tendons and muscles to control these scansors. Other modifications specific to *Hemidactylus*, and a few other padded lineages, include a raised penultimate phalanx resulting in a claw that is free of the

Table 1. Nodal support and ancestral states for key nodes of the gecko phylogeny.

Node	Clade Name	P(toepads)	ML bootstrap	Bayesian PP	Age (mya)
A	Gekkota	0.014 (0.000–0.035)	100	1.00	118–167
B	Pygopodoidea	0.233 (0.063–0.386)	100	1.00	66–102
C	unnamed	0.034 (0.000–0.136)	52	0.71	59–95
D	Carphodactylidae	0.000 (0.000–0.002)	100	1.00	20–46
E	Pygopodidae	0.000 (0.000–0.000)	100	1.00	28–44
F	Diplodactylidae	0.999 (0.999–1.00)	100	1.00	47–78
G	Gekkomorpha	0.020 (0.001–0.005)	92	1.00	113–157
H	Eublepharidae	0.001 (0.000–0.002)	100	1.00	60–98
I	Gekkonoidea	0.194 (0.031–0.386)	100	1.00	96–132
J	Sphaerodactylidae	0.008 (0.001–0.017)	100	1.00	85–117
K	unnamed	0.908 (0.775–0.997)	100	1.00	82–114
L	Phyllodactylidae	0.999 (0.998–1.00)	100	1.00	63–93
M	Gekkonidae	0.205 (0.008–0.523)	100	1.00	73–101
N	unnamed	0.020 (0.008–0.034)	100	1.00	60–87
O	Afro–Malagasy Clade	0.994 (0.973–1.00)	22	0.99	73–100
P	<i>Pachydactylus</i> Clade	0.998 (0.995–0.999)	100	1.00	41–69

Node labels refer to Figure 1. Posterior probabilities of the presence of toepads, $P(\text{toepads})$, calculated from the Bayesian comparative analysis. Nodal support values include maximum likelihood bootstrap values and Bayesian posterior probabilities. Node ages are from [39].

doi:10.1371/journal.pone.0039429.t001

expanded pad, and neomorphic skeletal structures, the paraphalanges, which aid in the support of the scansors.

Adhesive toepads were lost nearly as many times as they originated, and a padless morphology is secondarily derived in many lineages. Unequivocal losses occurred in several lineages of Phyllodactylidae, within the diplodactylid genus *Lucasium* and within the gekkonid genera *Pachydactylus* and *Chondrodactylus* (Fig. 4). The latter three losses are associated with habitat shifts away from a rupicolous lifestyle to burrowing in loose sand [75], and highlight the adaptive significance of toepad morphology. The padless *Chondrodactylus angulifer*, for example, still retains skeletal, muscular and tendinous structures in the digits similar to those of related species that possess a functional adhesive mechanism [76]. The secondary loss of adhesive toepads results in a more highly derived morphology and, consistent with Dollo's law [77], does not simply reverse to the ostensibly primitive state. This pattern of reduction demonstrates that the adhesive system, once fully assembled, becomes reduced as a functionally integrated structural module [78,79] that remains fully intact but diminished in size, rather than displaying disassembly and dissolution. This pattern can be seen in six additional species in the genera *Rhoptropus* and *Pachydactylus* that have independently transitioned to terrestriality and show reductions (but not complete loss as seen in *C. angulifer* and *P. rangei*) in the number of scansors and in setal length [75,80].

Geckos show many lineage-specific morphological traits associated with the repeated gains and losses of adhesive toepads. These traits (which include modifications of the integument, digital skeleton, paraphalanges, musculo-tendinous system, and the vascular sinus network.), when re-examined in light of the hypothesis presented here, allow us to distinguish among most gecko lineages with independently derived adhesive systems as well as identify primitively padless lineages [13,21,22,76]. Two morphological traits associated with the digital adhesive mechanism show multiple independent origins and highlight lineage-specific differences among geckos with adhesive toepads. The first trait is toepad form. Toepads have traditionally been classified

either as “leaf-toed,” having divided, expanded scansors at the distal end of the digit, or “basal,” having scansors distributed either proximally or along the entire length of the digit [22]. The leaf-toed morphology evolved in parallel 13–15 times and occurs in all of the major pad-bearing lineages (Fig. 1). Some leaf-toed lineages are independent derivations from a padless ancestor (e.g., *Euleptes*), whereas others are derived from a pad-bearing ancestor with close relatives having basal pads, implying that transitions between pad types are possible (e.g., *Goggia*; the Australian diplodactylids – *Crenadactylus*, *Oedura*, *Strophurus*, *Rhynchoedura*, *Diplodactylus* and *Lucasium*). Thus, the leaf-toed morphology has originated more often than adhesive pads as a whole, indicating the prevalence of transitions between pad types. The second trait is paraphalanges, cartilaginous or bony neomorphic structures associated with interphalangeal joints and thought to aid in support of the digital scansors or interdigital webbing [21,75]. Paraphalanges evolved nine times independently in geckos (Fig. 1). In almost every case their morphology is unique and easily distinguishable from those derived in other lineages. Paraphalanges exemplify complex characters that, when interpreted in a morphologically naïve context (e.g., a single binary character), may be seen as highly homoplastic, but if considered in light of specific structure and function (Fig. 1), reveal that each instance is unique.

The repeated gains and losses of the digital adhesive mechanism illustrate the importance of digital morphology in substrate interactions. Adhesive toepads enable animals that possess them to exploit vertically structured habitats, thereby allowing enhanced partitioning of the spatial niche [71,72]. The ability to adapt to specific substrates, for both digits with and without adhesive toepads, is also an important characteristic of geckos, and regions typified by geologic and topographic heterogeneity have been linked to increased diversity of gecko species [81]. Further research into the gekkotan adhesive mechanism should provide extensive material conducive to the study of the evolution of adaptive, complex phenotypes and partitioning of the spatial niche. Results

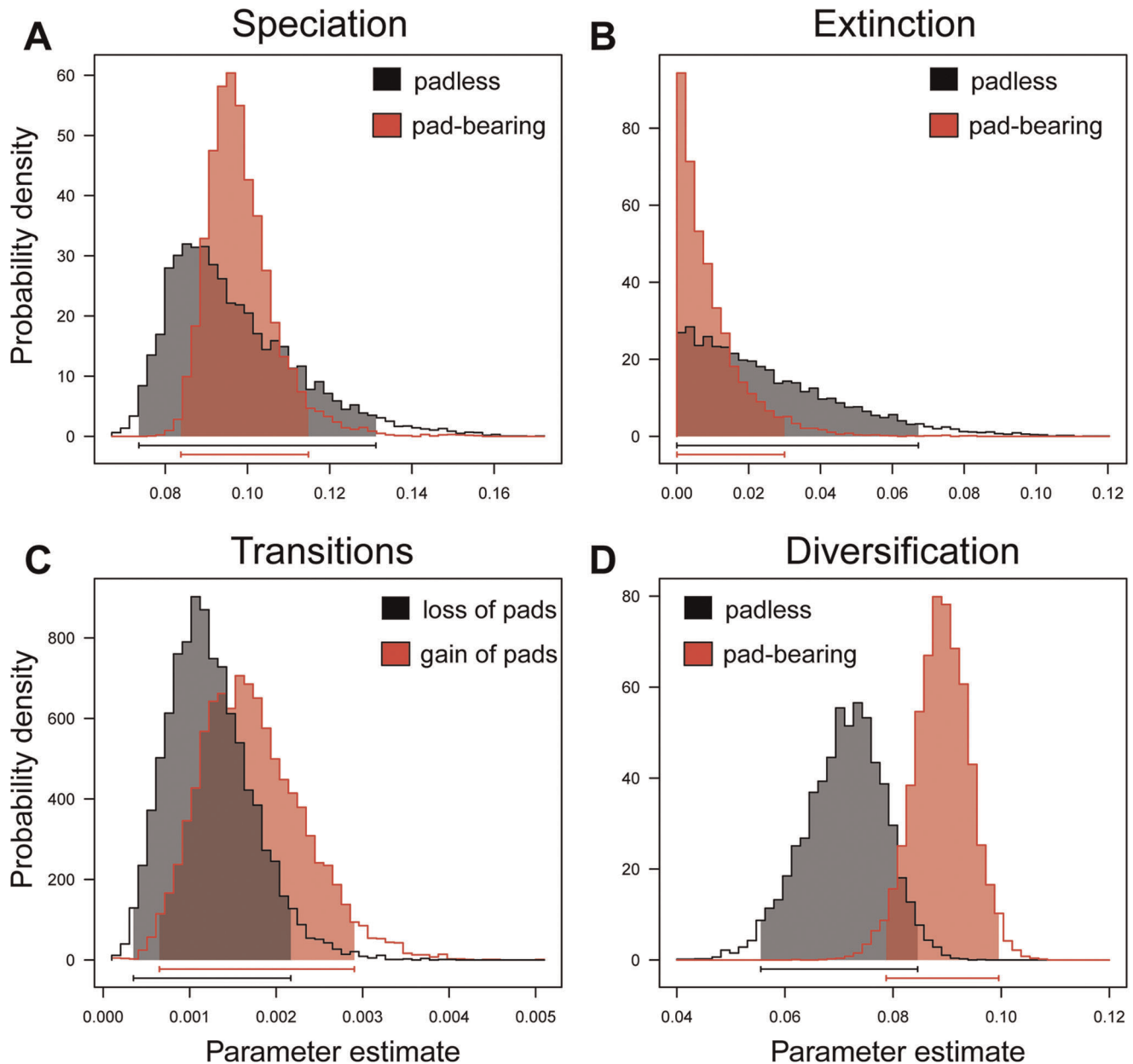


Figure 2. Bayesian parameter estimates inferred using the 6-parameter binary-state speciation and extinction (BiSSE) model. Estimates of: A. trait-specific speciation rates (λ); B. trait-specific extinction rates (μ); C. transition rate parameters (q_{01} = gain of adhesive toe pads, q_{10} = loss of adhesive toe pads); D. net diversification rates calculated as the difference between speciation (λ) and extinction (μ) rates for genera with and without adhesive toe pads. The 95% credibility intervals for each parameter are shaded and indicated by bars along the x-axis.

doi:10.1371/journal.pone.0039429.g002

presented here will prove useful in fostering additional research by identifying lineages with uniquely derived adhesive toe pad morphology, and in differentiating between ancestrally padless lineages and species that are secondarily padless. The repeated evolution of adhesive toe pads in the diverse and ancient geckos therefore, like the well-studied Caribbean *Anolis* ecomorphs [82], provides an outstanding resource for the understanding of mechanisms that drive phenotypic evolution, the balance between predictable evolutionary outcomes and historical contingency, and the relative influence of adaptation and developmental constraint on convergent and parallel evolution [2,3,5,83]. The sorts of questions that might arise from these considerations relate to

particular regions of the phylogeny, rather than to the synthetic bigger picture. Our broad-scale approach characterized adhesive toe pads as essentially being present or absent. It does not explore, except for the exemplar taxa chosen, any of the variations in expression of the anatomical components [13,76] of the adhesive system. Aspects such as the significance of adhesive pad size [84] within and between gekkotan lineages, the manifestation of particular morphological patterns [22,76] or the environmental circumstances associated with the reduction or loss of the adhesive system [80] necessitate a finer scale of focus. For example, the relative size and configuration of adhesive toe pads within lineages requires detailed examination at the species level in association

Table 2. Comparison of full and constrained maximum likelihood binary-state speciation and extinction (BiSSE) models.

Model	constraints	lambda0	lambda1	mu0	mu1	q01	q10	parameters	lnLik	AIC
full	None	0.0919287	0.0916504	0.0196976	0.0000042	0.0015639	0.0011354	6	-775.51	1563.0
constraint 1	lambda0 = lambda1	0.0917114	0.0917114	0.0195089	0.0000005	0.0015538	0.0011399	5	-775.51	1561.0
constraint 2	mu0 = mu1	0.0782689	0.0915912	0.0000147	0.0000147	0.0015438	0.0011227	5	-775.59	1561.2
constraint 3	q01 = q10	0.0917787	0.0917094	0.0197393	0.0000002	0.0013342	0.0013342	5	-775.61	1561.2
constraint 4	lambda0 = lambda1, mu0 = mu1	0.0858881	0.0858881	0.0000149	0.0000149	0.0015973	0.0010989	4	-777.70	1563.4
constraint 5	lambda0 = lambda1, q01 = q10	0.0917360	0.0917360	0.0197087	0.0000034	0.0013375	0.0013375	4	-775.61	1559.2
constraint 6	mu0 = mu1, q01 = q10	0.0781298	0.0916917	0.0000117	0.0000117	0.0013121	0.0013121	4	-775.75	1559.5
constraint 7	lambda0 = lambda1, mu0 = mu1, q01 = q10	0.0857970	0.0857970	0.0000003	0.0000003	0.0013039	0.0013039	3	-777.92	1561.8
constraint 8	q01 = 0	0.0815919	0.1616154	0.0000076	0.0960942	0.0000000	0.0019102	5	-778.31	1566.6
constraint 9	q10 = 0	0.1898625	0.0943962	0.1408593	0.0000000	0.0036345	0.0000000	5	-820.50	1651.0

Trait 0 lacks adhesive toe pads; trait 1 possesses adhesive toe pads. Lambda = trait specific speciation rates; mu = trait specific extinction rates; q = transition rate parameters. Constrained models are compared using the Akaike Information Criterion (AIC). The models with the lowest AIC scores are in bold.
doi:10.1371/journal.pone.0039429.t002

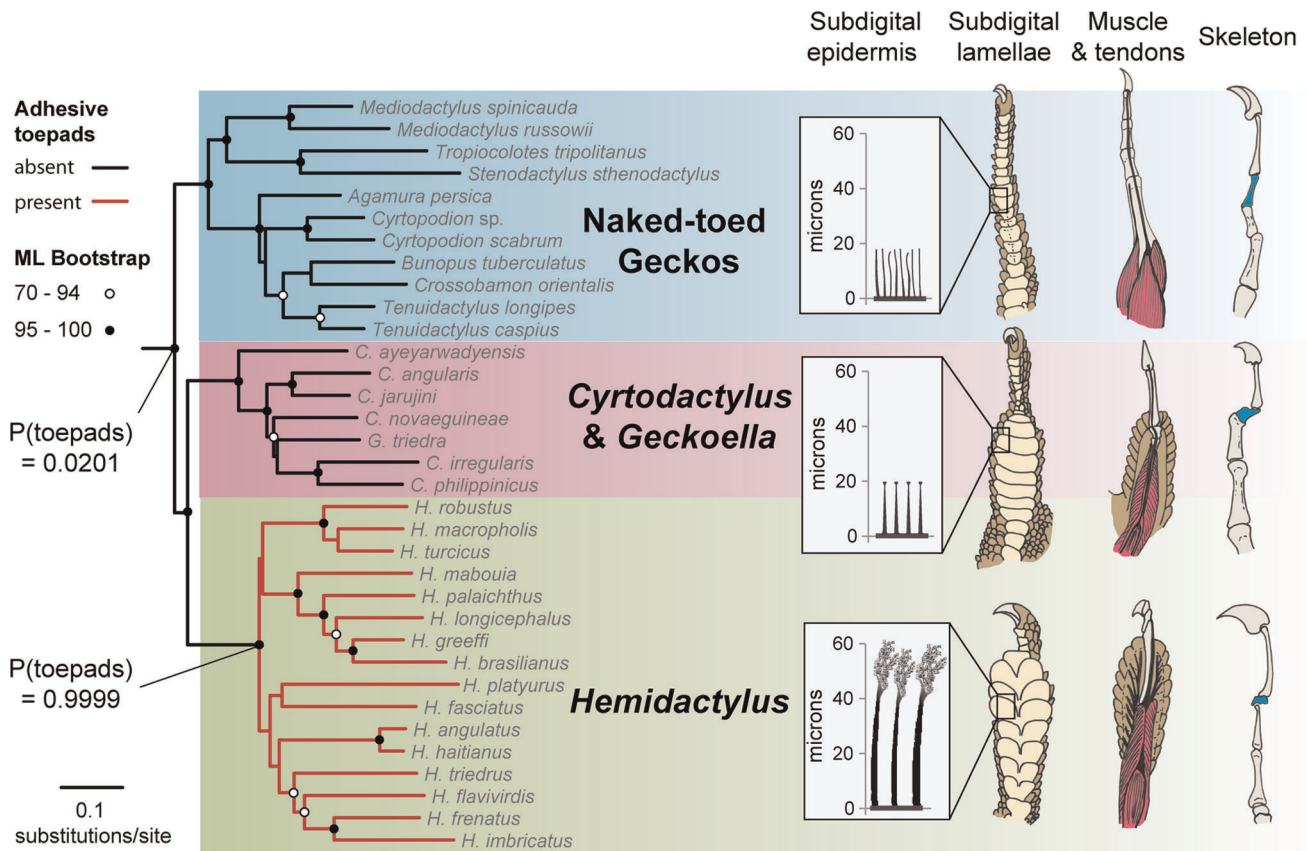


Figure 3. An unambiguous gain of adhesive toe pads in house geckos (*Hemidactylus*). Maximum likelihood tree of included *Hemidactylus* species and their close relatives, the padless “naked-toed” geckos and the *Cyrtodactylus* + *Geckoella* clade. Circles at nodes indicate bootstrap support. Bayesian posterior probabilities of the presence of toe pads are shown for two key nodes. Selected morphological components that comprise the digital adhesive mechanism are illustrated for each major clade. All three clades share spinules on the subdigital epidermis although only in *Hemidactylus* are they fully elaborated as setae. In the *Cyrtodactylus* + *Hemidactylus* clade: the subdigital lamellae are broadened; the antepenultimate phalanx of the digit (in blue) is reduced and, together with the penultimate phalanx and the claw, forms a raised arc; and the dorsal (extensor) musculature is expanded distally along the digit. The transition to fully functional toe pads occurs in *Hemidactylus*, which incorporate the tendinous system that controls individual scansors, and possesses epidermal spinules that are of increased length and that are multi-spatulate, enhancing functional adhesive surface area. These are recognizable as setae.
doi:10.1371/journal.pone.0039429.g003

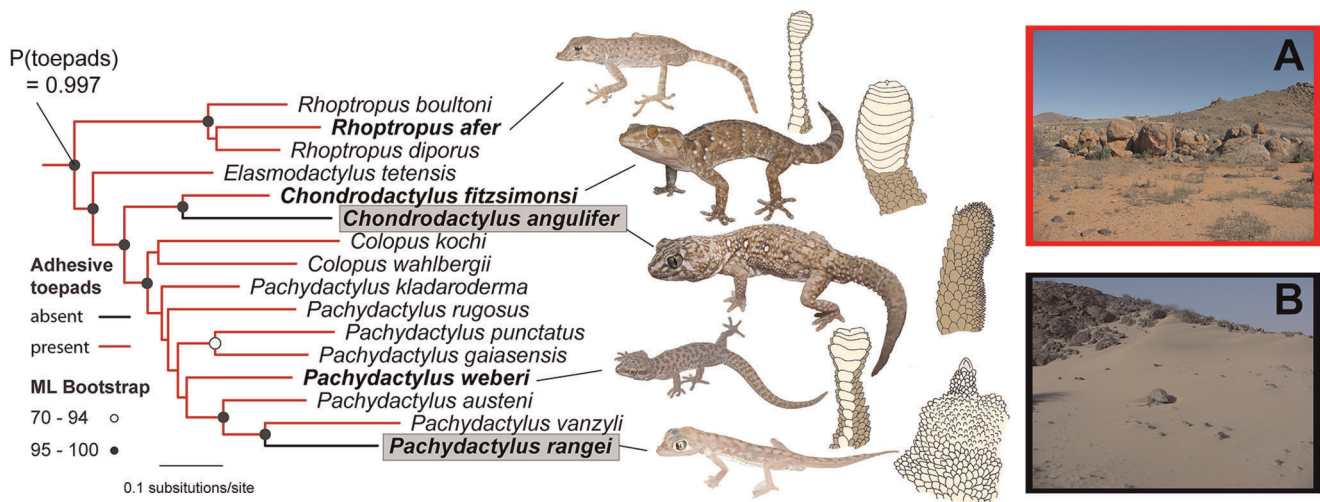


Figure 4. Two unambiguous losses of adhesive toepads in south African geckos. Maximum likelihood tree illustrating two independent losses of the digital adhesive mechanism in the southern African geckos *Chondrodactylus angulifer* and *Pachydactylus rangei* (in shaded boxes). Circles at nodes indicate bootstrap support. Bayesian posterior probabilities of the presence of toepads are shown for the most recent common ancestor of the included lineages, clearly indicating that the ancestor of this group possessed toepads. Representative species and their associated digital morphologies are illustrated. (A) Rupicolous habitat where padded members of this clade typically occur. (B) Sand dune habitat where the padless *Chondrodactylus angulifer* and the web-footed *Pachydactylus rangei* typically occur.
doi:10.1371/journal.pone.0039429.g004

with study, at the microscopic scale, of the locomotor surfaces that they exploit. Such approaches have been conducted for a limited number of taxa [85,86], and can now be expanded to other parts of the phylogeny to test for congruence in observed patterns. Likewise, localized radiations within the phylogeny can be explored for circumstances related to adhesive pad reduction and loss. Increasing aridity and the exploitation of terrestrial habitats have been associated with such trends in southern Africa and the interior of Australia [75,76,87,88]. Additionally, the evolution of adhesive pad form (leaf-toed versus basal toepad patterns) can now be investigated in detail by pinpointing instances in the phylogeny in which each pattern has arisen independently, and in which transitions from leaf-toed to basal toepad expression have occurred [76], enabling questions about functional and mechanical effectiveness to be investigated.

The diversity of adhesive toepads in geckos holds enormous potential for biomimicry research, not only at the molecular level but also across the entire range of size scales at which geckos operate [12]. Repeated evolution of adhesive toepads can provide the foundation for understanding what is necessary and sufficient to make the “natural” adhesive system operable and functional. That foundation will allow the phylogenetic variation to be stripped away so that basic assembly rules can be understood, which will make formulation of biomimetic approaches more logical. Rather than selecting one exemplar gecko to copy, identifying distinct morphological modules from an array of separate evolutionary origins will permit a simpler and more directed approach to understanding how this functionally integrated complex operates.

Supporting Information

Figure S1 Phylogenetic relationships among sampled gecko species estimated using partitioned maximum likelihood. Bootstrap values from 100 rapid bootstrap replicates are shown at nodes.
(PDF)

Figure S2 Phylogenetic relationships among sampled gecko species estimated using partitioned Bayesian analysis. Bayesian posterior probabilities are shown at nodes.
(PDF)

Figure S3 Gecko phylogeny and the evolution of adhesive toepads estimated using Bayesian methods. A. Bayesian posterior distributions of the presence of toepads for key nodes across the gecko phylogeny estimated using BayesTraits over 5,000 trees from the Bayesian phylogenetic analysis. Numbers refer to node labels in panel B. B. Maximum likelihood tree showing phylogenetic relationships among gecko genera. The presence (red) or absence (black) of adhesive toepads is illustrated by colored squares on the tips of the branches (squares with two colors indicate polymorphism within the clade). Numbered nodes refer to Bayesian posterior distributions in panel A. C. Transition rate parameters from the BayesTraits analyses for the one rate model (in blue) and the two rate model where q_{01} = gain of adhesive toepads (in red) and q_{10} = loss of adhesive toepads (in black).
(PDF)

Figure S4 Phylogenetic relationships among sampled gecko species and the evolution of adhesive toepads estimated using maximum likelihood. Maximum likelihood tree showing phylogenetic relationships among sampled gecko species. Node color indicates ancestral states reconstructed using the ml1 model, summarized across a sample of 5,000 trees from the Bayesian phylogenetic analysis.
(PDF)

Figure S5 Phylogenetic relationships among sampled gecko species and the evolution of adhesive toepads estimated using parsimony. Maximum likelihood tree showing phylogenetic relationships among sampled gecko species. Node color indicates ancestral states reconstructed using parsimony (one of 114 equally parsimonious reconstructions).
(PDF)

Figure S6 The number of transitions between the gain and loss of adhesive toepads in geckos. Number of toepad gains (0 → 1) and losses (1 → 0) calculated using parsimony for 5,000 trees sampled from the Bayesian posterior distribution. Treescore = 20.

(PDF)

Table S1 Details of material examined.

(PDF)

Table S2 Summary of DNA sequence partitions.

(PDF)

References

- Gompel N, Prud'homme B (2009) The causes of repeated genetic evolution. *Developmental Biology* 332: 36–47.
- Losos JB, Jackman TR, Larson A, De Queiroz K, Rodriguez-Schettino L (1998) Contingency and determinism in replicated adaptive radiations of island lizards. *Science* 279: 2115–2118.
- Wake DB, Wake MH, Specht CD (2011) Homoplasy: From detecting pattern to determining process and mechanism of evolution. *Science* 331: 1032–1035.
- Haldane JBS (1932) *The Causes of Evolution*. London: Longmans, Green and Co.
- Losos JB (2011) Convergence, adaptation, and constraint. *Evolution* 65: 1827–1840.
- Kopp A (2009) Metamodels and phylogenetic replication: A systematic approach to the evolution of developmental pathways. *Evolution* 63: 2771–2789.
- Pianka ER, Vitt IJ (2003) *Lizards: Windows to the Evolution of Diversity*. Berkeley, CA: University of California Press.
- Vermelij GJ (2006) Historical contingency and the purported uniqueness of evolutionary innovations. *Proceedings of the National Academy of Sciences of the United States of America* 103: 1804–1809.
- Wiens JJ, Brandley MC, Reeder TW (2006) Why does a trait evolve multiple times within a clade? Repeated evolution of snakelike body form in squamate reptiles. *Evolution* 60: 123–141.
- Irschick DJ, Austin CC, Petren K, Fisher RN, Losos JB, et al. (1996) A comparative analysis of clinging ability among pad-bearing lizards. *Biological Journal of the Linnean Society* 59: 21–35.
- Green DM (1981) Adhesion and the toe-pads of treefrogs. *Copeia* 1981: 790–796.
- Autumn K, Sitti M, Liang YCA, Peattie AM, Hansen WR, et al. (2002) Evidence for van der Waals adhesion in gecko setae. *Proceedings of the National Academy of Sciences of the United States of America* 99: 12252–12256.
- Russell AP (2002) Integrative functional morphology of the gekkotan adhesive system (Reptilia: Gekkota). *Integrative and Comparative Biology* 42: 1154–1163.
- Autumn K, Dittmore A, Santos D, Spenko M, Cutkosky M (2006) Frictional adhesion: A new angle on gecko attachment. *Journal of Experimental Biology* 209: 3569–3579.
- Maderson PFA (1964) Keratinized epidermal derivatives as an aid to climbing in gekkonid lizards. *Nature* 203: 780–781.
- Maderson PFA (1970) Lizard glands and lizard hands: Models for evolutionary study. *Forma et Functio* 3: 179–204.
- Peattie AM (2008) Subdigital setae of narrow-toed geckos, including a cubelpharid (*Aeluroscalabotes felinus*). *The Anatomical Record* 291: 869–875.
- Bauer AM, Russell AP (1987) Morphology of gekkonid cutaneous sensilla, with comments on function and phylogeny in the Carphodactylini (Reptilia: Gekkonidae). *Canadian Journal of Zoology* 66: 1583–1588.
- Alibardi L, Maderson PFA (2003) Observations on the histochemistry and ultrastructure of regenerating caudal epidermis of the tuatara *Sphenodon punctatus* (Sphenodontida, Lepidosauria, Reptilia): A contribution to an understanding of the lepidosaurian epidermal generation and the evolutionary origin of the squamate shedding complex. *Journal of Morphology* 256: 134–145.
- Russell AP (1975) A contribution to the functional analysis of the foot of the Tokay, *Gekko gekko* (Reptilia: Gekkonidae). *Journal of Zoology* 176: 437–476.
- Russell AP, Bauer AM (1988) Paraphalangeal elements of gekkonid lizards - a comparative survey. *Journal of Morphology* 197: 221–240.
- Russell AP (1979) Parallelism and integrated design in the foot structure of gekkonine and diplodactylid geckos. *Copeia* 1979: 1–21.
- Pianka ER, Sweet SS (2005) Integrative biology of sticky feet in geckos. *Bioessays* 27: 647–652.
- Russell AP, Higham TE (2009) A new angle on clinging in geckos: Incline, not substrate, triggers the deployment of the adhesive system. *Proceedings of the Royal Society B-Biological Sciences* 276: 3705–3709.
- Uetz P (2010) The original descriptions of reptiles. *Zootaxa* 2334: 59–68.
- Vidal N, Hedges SB (2009) The molecular evolutionary tree of lizards, snakes, and amphisbaenians. *Comptes Rendus Biologies* 332: 129–139.
- Townsend TM, Larson A, Louis E, Macey JR (2004) Molecular phylogenetics of Squamata: The position of snakes, amphisbaenians, and dibamids, and the root of the squamate tree. *Systematic Biology* 53: 735–757.
- Arnold EN, Poinar G (2008) A 100 million year old gecko with sophisticated adhesive toe pads, preserved in amber from Myanmar. *Zootaxa* 1847: 62–68.
- Bauer AM, Böhme W, Weitschat W (2005) An early Eocene gecko from Baltic amber and its implications for the evolution of gecko adhesion. *Journal of Zoology* 265: 327–332.
- Aristotle (1910) *The History of Animals*. Thompson DW, translator. Oxford: Clarendon Press.
- Mahendra BC (1941) Contributions to the bionomics, anatomy, reproduction and development of the Indian house gecko, *Hemidactylus flaviviridis* Rüppel. Part II. The problem of locomotion. *Proceedings of the Indian Academy of Sciences* 13: 288–306.
- Mahdavi A, Ferreira L, Sundback C, Nichol JW, Chan EP, et al. (2008) A biodegradable and biocompatible gecko-inspired tissue adhesive. *Proceedings of the National Academy of Sciences of the United States of America* 105: 2307–2312.
- Kim S, Spenko M, Trujillo S, Heyneman B, Santos D, et al. (2008) Smooth vertical surface climbing with directional adhesion. *IEEE Transactions on Robotics* 24: 65–74.
- Geim AK, Grigorieva SVDIV, Novoselov KS, Zhukov AA, Shapoval SY (2003) Microfabricated adhesive mimicking gecko foot-hair. *Nature Materials* 2: 461–463.
- Fitzinger L (1843) *Systema Reptilium (Amblyglossae)*. Vindobonae (Vienna): Braumüller et Seidel Bibliopolas. 106 p.
- Vanzolini PE (1968) Geography of the South American Gekkonidae (Sauria). *Arquivos de Zoologia (São Paulo)* 17: 85–112.
- Loveridge A (1947) Revision of the African lizards of the family Gekkonidae. *Bulletin of the Museum of Comparative Zoology* 98: 1–469.
- Underwood G (1954) On the classification and evolution of geckos. *Proceedings of the Zoological Society of London* 124: 469–492.
- Gamble T, Bauer AM, Colli GR, Greenbaum E, Jackman TR, et al. (2011) Coming to America: Multiple origins of New World geckos. *Journal of Evolutionary Biology* 24: 231–244.
- Han D, Zhou K, Bauer AM (2004) Phylogenetic relationships among gekkotan lizards inferred from *C-mos* nuclear DNA sequences and a new classification of the Gekkota. *Biological Journal of the Linnean Society* 83: 353–368.
- Fujita MK, Papenfuss TJ (2011) Molecular systematics of *Stenodactylus* (Gekkonidae), an Afro-Arabian gecko species complex. *Molecular Phylogenetics and Evolution* 58: 71–75.
- Nielsen SV, Bauer AM, Jackman TR, Hitchmough RA, Daugherty CH (2011) New Zealand geckos (Diplodactylidae): Cryptic diversity in a post-Gondwanan lineage with trans-Tasman affinities. *Molecular Phylogenetics and Evolution* 59: 1–22.
- Gamble T, Bauer AM, Greenbaum E, Jackman TR (2008) Out of the blue: A novel, trans-Atlantic clade of geckos (Gekkota, Squamata). *Zoologica Scripta* 37: 355–366.
- Jackman TR, Bauer AM, Greenbaum E, Glaw F, Vences M (2008) Molecular phylogenetic relationships among species of the Malagasy-Comoran gecko genus *Paroedura* (Squamata : Gekkonidae). *Molecular Phylogenetics and Evolution* 46: 74–81.
- Notredame C, Higgins DG, Heringa J (2000) T-Coffee: A novel method for fast and accurate multiple sequence alignment. *Journal of Molecular Biology* 302: 205–217.
- Maddison WP, Maddison DR (1992) *MacClade, analysis of phylogeny and character evolution*. 3.0 ed. Sunderland, MA: Sinauer.
- Stamatakis A (2006) RAXML-VI-HP: Maximum likelihood-based phylogenetic analyses with thousands of taxa and mixed models. *Bioinformatics* 22: 2688–2690.
- Huelsenbeck JP, Ronquist F (2001) MrBayes: Bayesian inference of phylogenetic trees. *Bioinformatics* 17: 754–755.

Acknowledgments

We thank D. J. Irschick and an anonymous reviewer for valuable comments that greatly improved the quality of the manuscript; R. FitzJohn, K. Kozak, A. M. Simons and D. B. Wake for comments on an earlier draft of the manuscript and help with analyses; the museums and colleagues that generously provided tissues and access to specimens; J. Marais and A. Captain for photos.

Author Contributions

Conceived and designed the experiments: TG AMB TRJ. Performed the experiments: TG EG. Analyzed the data: TG EG. Contributed reagents/materials/analysis tools: AMB APR TRJ. Wrote the paper: TG APR AMB.

49. Gamble T, Bauer AM, Greenbaum E, Jackman TR (2008) Evidence for Gondwanan vicariance in an ancient clade of gecko lizards. *Journal of Biogeography* 35: 88–104.
50. Posada D (2008) jModelTest: Phylogenetic model averaging. *Molecular Biology and Evolution* 25: 1253–1256.
51. Sullivan J, Swofford DL, Naylor GJP (1999) The effect of taxon sampling on estimating rate heterogeneity parameters of maximum-likelihood models. *Molecular Biology and Evolution* 16: 1347–1356.
52. Yang Z (2006) *Computational Molecular Evolution*. Oxford, England: Oxford University Press.
53. Rambaut A, Drummond AJ (2007) Tracer. 1.5 ed: Distributed by authors.
54. Nylander JAA, Wilgenbusch JC, Warren DL, Swofford DL (2008) AWTY (are we there yet?): A system for graphical exploration of MCMC convergence in Bayesian phylogenetics. *Bioinformatics* 24: 581–583.
55. Maddison WP, Maddison DR (2008) Mesquite: A modular system for evolutionary analysis, 2.5 ed.
56. Pagel M, Meade A, Barker D (2004) Bayesian estimation of ancestral character states on phylogenies. *Systematic Biology* 53: 673–684.
57. Lutzoni F, Pagel M, Reece V (2001) Major fungal lineages are derived from lichen symbiotic ancestors. *Nature* 411: 937–940.
58. Lewis PO (2001) A likelihood approach to estimating phylogeny from discrete morphological character data. *Systematic Biology* 50: 913–925.
59. Pagel M (1999) Inferring the historical patterns of biological evolution. *Nature* 401: 877–884.
60. Schluter D, Price T, Mooers AO, Ludwig D (1997) Likelihood of ancestor states in adaptive radiation. *Evolution* 51: 1699–1711.
61. Maddison WP, Midford PE, Otto SP (2007) Estimating a binary character's effect on speciation and extinction. *Systematic Biology* 56: 701–710.
62. Goldberg EE, Iqbal B (2008) On phylogenetic tests of irreversible evolution. *Evolution* 62: 2727–2741.
63. FitzJohn RG, Maddison WP, Otto SP (2009) Estimating trait-dependent speciation and extinction rates from incompletely resolved phylogenies. *Systematic Biology* 58: 595–611.
64. Sanderson MJ (2002) Estimating absolute rates of molecular evolution and divergence times: A penalized likelihood approach. *Molecular Biology and Evolution* 19: 101–109.
65. Paradis E, Claude J, Strimmer K (2004) APE: Analyses of Phylogenetics and Evolution in R language. *Bioinformatics* 20: 289–290.
66. Kluge AG (1983) Cladistic relationships among gekkonid lizards. *Copeia* 1983: 465–475.
67. Russell AP, Bauer AM (2002) Underwood's classification of the geckos: a 21st century appreciation. *Bulletin of The Natural History Museum (Zoology)* 68: 113–121.
68. Bauer AM, Good DA, Branch WR (1997) The taxonomy of the southern African leaf-toed geckos (Squamata: Gekkonidae), with a review of Old World "*Phyllodactylus*" and the description of five new genera. *Proceedings of the California Academy of Sciences* 49: 447–497.
69. Gamble T, Daza JD, Colli GR, Vitt LJ, Bauer AM (2011) A new genus of miniaturized and pug-nosed gecko from South America (Sphaerodactylidae: Gekkota). *Zoological Journal of the Linnean Society* 163: 1244–1266.
70. Oliver PM, Bauer AM, Greenbaum E, Jackman T, Hobbie T (2012) Molecular phylogenetics of the arboreal Australian gecko genus *Oedura* Gray 1842 (Gekkota: Diplodactylidae): Another plesiomorphic grade? *Molecular Phylogenetics and Evolution* 63: 255–264.
71. Vitt LJ, Pianka ER, Cooper WE, Schwenk K (2003) History and the global ecology of squamate reptiles. *American Naturalist* 162: 44–60.
72. Vitt LJ, Pianka ER (2005) Deep history impacts present-day ecology and biodiversity. *Proceedings of the National Academy of Sciences of the United States of America* 102: 7877–7881.
73. Losos JB (2010) Adaptive radiation, ecological opportunity, and evolutionary determinism. *American Naturalist* 175: 623–639.
74. Russell AP, Johnson MK, Delannoy SM (2007) Insights from studies of gecko-inspired adhesion and their impact on our understanding of the evolution of the gekkotan adhesive system. *Journal of Adhesion Science and Technology* 21: 1119–1143.
75. Lamb T, Bauer AM (2006) Footprints in the sand: Independent reduction of subdigital lamellae in the Namib-Kalahari burrowing geckos. *Proceedings of the Royal Society B—Biological Sciences* 273: 855–864.
76. Russell AP (1976) Some comments concerning interrelationships amongst gekkonine geckos. In: Bellairs AD, Cox CB, editors. *Morphology and Biology of Reptiles*. London: Academic Press. pp 217–244.
77. Gould SJ (1970) Dollo on Dollo's law: Irreversibility and the status of evolutionary laws. *Journal of the History of Biology* 3: 189–212.
78. Von Dassow G, Munro E (1999) Modularity in animal development and evolution: elements of a conceptual framework for EvoDevo. *Journal of Experimental Zoology* 285: 307–325.
79. Wagner GP (1996) Homologues, natural kinds and the evolution of modularity. *American Zoologist* 36: 36–43.
80. Johnson MK, Russell AP (2009) Configuration of the setal fields of *Rhoptropus* (Gekkota: Gekkonidae): Functional, evolutionary, ecological and phylogenetic implications of observed pattern. *Journal of Anatomy* 214: 937–955.
81. Bauer AM (1999) Evolutionary scenarios in the *Pachydactylus* group geckos of southern Africa: New hypotheses. *African Journal of Herpetology* 48: 53–62.
82. Losos JB (2009) *Lizards in an Evolutionary Tree: Ecology and Adaptive Radiation of Anoles*. Berkeley, CA: University of California Press.
83. Gould SJ (2002) *The Structure of Evolutionary Theory*. Cambridge, MA, USA: Belknap Press.
84. Webster NB, Johnson MK, Russell AP (2009) Ontogenetic scaling of scansorial surface area and setal dimensions of *Chondrodactylus bibronii* (Gekkota: Gekkonidae): Testing predictions derived from cross-species comparisons of gekkotans. *Acta Zoologica* 90: 18–29.
85. Russell AP, Johnson MK (2009) The gecko effect: Design principles of the gekkotan adhesive system across scales of organization. In: Favret EA, Fuentes NO, editors. *Functional Properties of Bio-inspired Surfaces: Characterization and Technological Applications*. Singapore: World Scientific Publishing Co. pp 103–132.
86. Russell AP, Johnson MK (2007) Real-world challenges to, and capabilities of, the gekkotan adhesive system: Contrasting the rough and the smooth. *Canadian Journal of Zoology* 85: 1228–1238.
87. Higham TE, Russell AP (2010) Divergence in locomotor performance, ecology, and morphology between two sympatric sister species of desert-dwelling gecko. *Biological Journal of the Linnean Society* 101: 860–869.
88. Johnson MK, Russell AP, Bauer AM (2005) Locomotor morphometry of the *Pachydactylus* radiation of lizards (Gekkota : Gekkonidae): A phylogenetically and ecologically informed analysis. *Canadian Journal of Zoology* 83: 1511–1524.