

November 1982

Message from the Spiritual Advisor

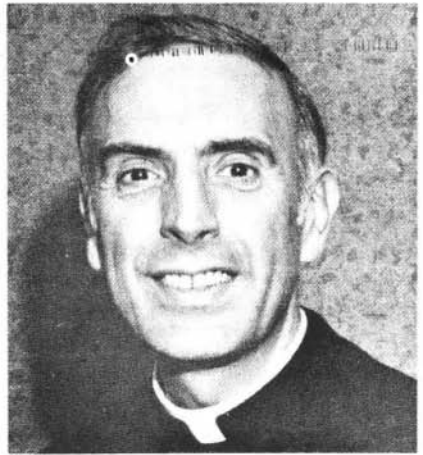
Dino Lornzetti

Follow this and additional works at: <http://epublications.marquette.edu/lmq>

Recommended Citation

Lornzetti, Dino (1982) "Message from the Spiritual Advisor," *The Linacre Quarterly*: Vol. 49: No. 4, Article 2.
Available at: <http://epublications.marquette.edu/lmq/vol49/iss4/2>

Message from the Spiritual Advisor



In the search for some place in which to be restored to the fullness of health, the sick are motivated to go long distances, far away from their own homes in order to be healed. They are anxious to find an atmosphere of sanctity, so as to beg for the miracle of being cured. Some travel to Lourdes, Fatima and Jerusalem, just to be at a holy place. The greater number, however, walk to their local church so as to be seated in the awesomeness of holiness to present their petitions.

The desire to meet a sacred person is even more impelling than finding a sacred place. This is evident throughout history, when people crowded around the feet of philosophers, prophets and saints to listen attentively to their words of wisdom. Even today, vast numbers of people assemble just to be within sight of someone whom they may consider to be holy, such as Mother Teresa of Calcutta and Our Holy Father, Pope John Paul II.

In the public ministry of Jesus, great crowds surrounded Him wherever He went. They were looking not only for answers to the mystery of the universe and its Creator, but also for daily food, restoration to health and for knowledge to free them from their ignorance.

St. Matthew, 9:20, tells this story: "A woman who had suffered from severe bleeding for twelve years came up behind Jesus and touched the edge of His cloak. She said to herself, 'If only I touch His cloak, I will get well.' Jesus turned around, saw her and said, 'Courage, my daughter. Your faith has made you well.' At that moment the woman became well."

"Courage" is the first word Jesus uttered before proceeding to cure the woman. In our modern society, *discouragement* is a common symptom among the majority of persons who are sick. They need to

be encouraged, put at ease, especially before and after surgery, and to be continually uplifted from their discomforts and troublesome ailments.

Your words of encouragement imbued with faith, when given truthfully, prayerfully and in a heartfelt, caring manner have a tremendous effect on your patient. By God's grace, you are indeed a sacred person. People are anxious to "hang on" to you, to touch the hem of your suit, for you are able to dispel their fears. Your patients have great faith in you. Their prayers are that they be the recipient of the very healing power hidden within you. Yes, you are that holy person.

— Msgr. Dino J. Lorenzetti

Statement of Ownership, Management and Circulation

(Required by 39 U.S.C. 3685)

Title of publication: Linacre Quarterly; Pub. No.: 00587100

Date of filing: October 15, 1982

Frequency of issue: quarterly

Number of issues published annually: four

Annual subscription price: \$20

Location of known office of publication: 850 Elm Grove Rd., Elm Grove, WI 53122

Location of the headquarters of the publisher:

850 Elm Grove Rd., Elm Grove, WI 53122

Publisher: National Federation of Catholic Physicians' Guilds, Inc.

850 Elm Grove Rd., Elm Grove, WI 53122

Editor: John P. Mullooly, M.D., 8430 W. Capitol Dr., Milwaukee, WI 53222

Managing editor: Robert H. Herzog, 850 Elm Grove Rd., Elm Grove, WI 53122

Owner: National Federation of Catholic Physicians' Guilds, Inc.

850 Elm Grove Rd., Elm Grove, WI 53122

Known bondholders, mortgages, and other security holders owning or holding 1 per cent or more of total amount of bonds, mortgages or other securities: None

The purpose, function and nonprofit status of this organization and the exempt status for federal income tax purposes have not changed during the preceding twelve months.

Total number of copies printed: 7,110

Mail subscriptions: 6,294

Total paid circulation: 6,294

Free distribution by mail: 500

Copies not distributed: 316

Total average number of copies each issue during preceding twelve months: 7,110

Total average number of copies of single issue published nearest to filing date: 7,110