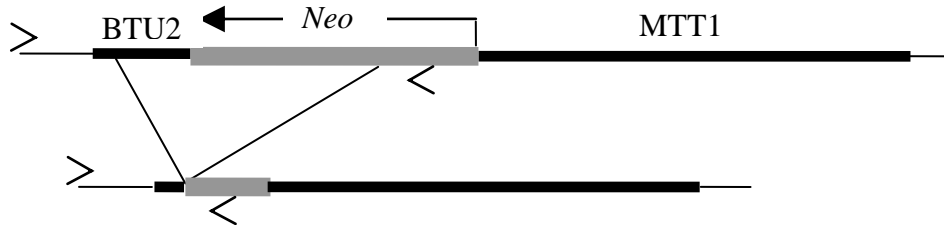


Supplementary Data:

Figure A.. Structure and sequence of the PCR product from the deleted *NgoA* locus

A.



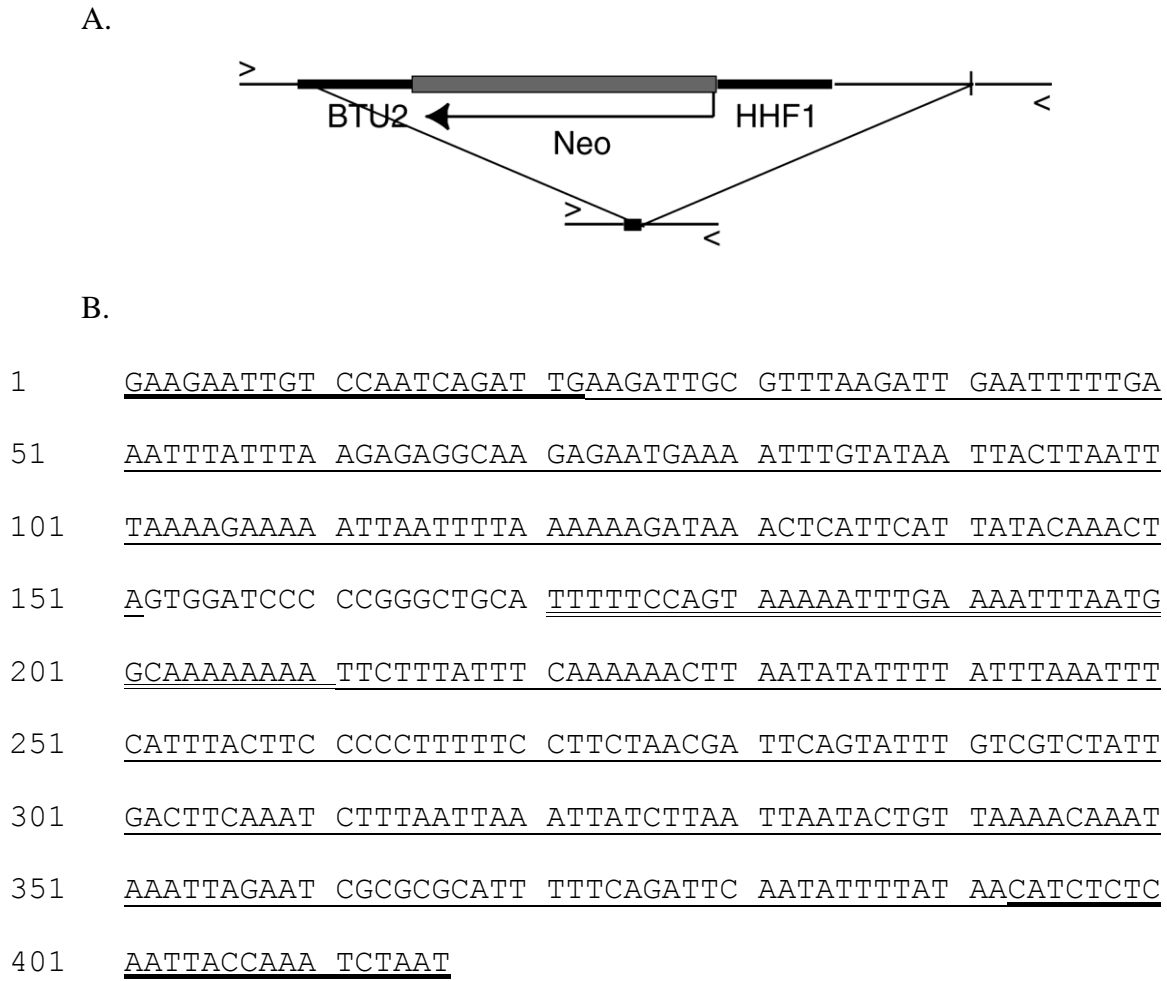
B.

1     GATTATTCTC TTCTAAAATA TGGAGGTAAT AATAATTAAT TTAATTTTAA  
51     ATAAAACCAT TAAAATTTAA TCATTTATTA AAAGAAAAAC TATCTTTGAA  
101    AAGTAAATGT TTTAAGTTGG TTTTACAAGA AACTATGATG CTAATACAG  
151    AGATAAAGAT AAAAATAAAC AAAAGATTCT AAAATAATAT TTATTTATTA  
201    TACAGATCCC CCGGGCTGCA TTTTCCAGT AAAAATTTGA AAATTTAATG  
251    GCAAAAAAAAA **T**CAGAG**CAGC** CGATTGTCTG TTGTGCCAG

A. Schematic of the *NgoA* knockout locus and the deletion identified by PCR amplification. Thin lines, *NgoA* DNA; *MTT1*, promoter region of the *MTT1* gene; *BTU2*, 3' transcription termination sequences from the  $\beta$ -tubulin 2 gene; *Neo*, gene conferring paromomycin resistance. B. Sequence of the PCR product from the *NgoA::neo3* deleted chromosome. Single lines, *NgoA* gene; heavy lines, PCR primers; no underlining, cloning vector; double underline, *BTU* region of the *neo3* cassette; bold sequences, *Neo* gene coding region.

Supplementary Data:

Figure B. Structure and sequence of the PCR product from the deleted HTT1 locus



A. Schematic of the HHT1 knockout locus and the deletion identified by PCR amplification. Thin lines, HTT1 DNA; HHF1, promoter regions of the histone H4-I gene; BTU2, 3' transcription termination sequences from the  $\beta$ -tubulin 2 gene; Neo, gene conferring paromomycin resistance. B. Sequence of the PCR product from the HHT1::neo2 deleted chromosome. Single lines, HHT1 gene; heavy lines, PCR primer; no underlining, cloning vector; double underline, BTU2 region of the neo cassette.